



Public Water System Annual Report 2025

Name of the Public Water System: **Cartier Regional Water Co-op (CRWC) – 3 Locations**
36.00 – Cartier Regional Public Water System
89.40 – Headingley Regional Public Water System &
162.75 – Peony Farm Reservoir Public Water System

Name of the legal owner: **Cartier Regional Water Co-op Inc.**

Contact Person: **Danielle Vaillant, General Manager CRWC Inc.**

Phone: **204-832-2555**

Email: info@crwc.ca

Website: **crwc.ca**

Water system's emergency number: **Cartier WTP-36.00: 204-353-4055 or**
Headingley WTP-89.40: 204-832-2555

Name of Operator: **Grant McGorman, Director of Operations for CRWC Inc.**

Phone during business hours: **204-832-3555**

Emergency number: **Cartier WTP-36.00: 204-353-4055 or**
Headingley WTP-89.40: 204-832-2555

Date prepared: March 30, 2026

A handwritten signature in black ink that reads 'Danielle Vaillant'.

Danielle Vaillant

General Manager CRWC Inc.

Table of Contents

2025	
Public Water System Annual Report.....	1
Table of Contents.....	2
Introduction	3
1. Description of the Water System.....	3
1.1. Water Supply Sources.....	3
1.2. Intake Structures and Storage.....	3
1.3. Water Treatment Process.....	4
1.4. Distribution System.....	7
1.5. Storage Reservoirs.....	11
1.6. Number of Connections, Population served, and Types of Water Users.....	11
1.7. Classification and Certification.....	12
2. Disinfection System.....	13
2.1. Type of Disinfection System.....	13
2.2. Equipment Redundancy and Monitoring.....	14
2.3. Disinfectant Residual Performance.....	14
3. List of Water Quality Standards.....	14
3.1. Result Improvement.....	17
4. Water System Incidents and Corrective Actions.....	17
5. Additional Records Required.....	17
6. Emergencies, Compliance Issues and Operational Issues.....	17
7. Drinking Water Safety Orders on your System and Actions Taken in Response.....	17
8. Boil Water Advisories and Responses.....	17
9. Warnings Issued or Charges Laid on the Systems.....	18
10. Major Expenses Incurred.....	18
11. Future System Expansion and/or Increased Production.....	18
Appendix A: Cartier WTP 36.00 2025 Bacteriological Results.....	19
Appendix B: Headingley WTP 89.40 2025 Bacteriological Results.....	24
Appendix C: Peony Farm Reservoir 162.75 2025 Bacteriological Results.....	30
Appendix D: Cartier and Headingley Regional Water System THM and HAA Results.....	31
Appendix E: Cartier Regional Public Water System (36.00) Annual Lab Results.....	33
Appendix F: Headingley Regional Public Water System (89.40) Annual Lab Results.....	36
Appendix G: Water Audits 2025.....	38

Introduction

The Cartier Regional Water Co-op (CRWC) owns and operates two primary water treatment facilities, ten rural reservoirs, two booster stations, seven truck fill stations, and approximately 270 kilometres of water transmission main. The reservoir located at Peony Farm in Portage la Prairie is supplied with treated water from the City of Portage la Prairie’s water treatment facility.

CRWC’s water treatment operations are committed to delivering high-quality drinking water in quantities sufficient to meet public demand. This is achieved through safe, efficient, and cost-effective practices, while maintaining full compliance with all applicable regulatory requirements governing potable water supply.

CRWC recognizes the public’s right to accessible information regarding the quality of their drinking water and the infrastructure that supports its delivery. In support of this commitment to transparency, the following report has been prepared to summarize system operations, water quality performance, and regulatory compliance for 2025.

1. Description of the Water System

The CRWC supplies potable drinking water to an estimated population of 15,289. Water treated at the CRWC facilities meets all applicable health and aesthetic objectives established by the Guidelines for Canadian Drinking Water Quality.

1.1. Water Supply Sources

Both the Cartier and Headingley Regional Water Treatment Plants (WTPs) source raw surface water from the Assiniboine River. The Peony Farm Reservoir receives treated water from the City of Portage la Prairie Water Treatment Facility. Additional information is available in the City of Portage la Prairie’s annual water system report (Water & Sewer – City of Portage la Prairie).

1.2. Intake Structures and Storage:

Cartier WTP

The Cartier WTP utilizes a stainless-steel intake structure designed to prevent fish injury, located immediately north of the Baie St. Paul Bridge crossing. Raw water is conveyed through a 400 mm pipeline to a concrete wet well on the east bank of the river. Two submersible pumps transfer water via a 300 mm pipeline to the treatment facility.

Raw water may be directed either to aerated storage ponds for pre-settling and algae control or directly to the plant’s raw water chamber. Standard operation involves pumping to the north storage pond, with subsequent flow to the south pond for additional settling, particularly during summer months. These ponds provide operational buffering during periods of reduced river water quality.

The intake is currently flushed using gravity flow, which has proven insufficient to fully remove accumulated silt from intake screens. As required, debris removal is completed through contracted services. Both ponds share a common wet well, allowing for integrated water level monitoring.

Headingley WTP

The Headingley WTP utilizes the existing river intake infrastructure at the Headingley Correctional Centre (HCC). Under a memorandum of understanding with Manitoba Transportation and Infrastructure (MTI), CRWC is responsible for the ownership, operation, and maintenance of the intake channel, wet well, pumps, and gate valves.

River water enters a concrete intake channel and passes through bar screens into a pumping chamber. Sluice gate valves remain open under normal operating conditions. The wet well maintains a constant level, and two 60 hp pumps operate in a lead/lag configuration to supply raw water to the storage ponds.

A low dose of algaecide is applied during pumping to control algae growth and reduce organic content. Water is conveyed through a 400 mm pipeline to two raw water storage ponds, which typically operate in parallel but may be isolated individually for maintenance.

Both ponds are equipped with aeration systems supplied by blowers located in the Raw Water Pump House (RWPH). The RWPH also houses a wet well that monitors pond levels and controls pump operation at the river intake. During adverse river conditions (e.g., high turbidity), intake operations may be suspended while stored water supplies maintain plant operation.

The wet well also contains three 100 hp raw water pumps, which supply water to the WTP during treatment operations.

1.3. Water Treatment Process

Cartier WTP

Raw water flows by gravity from the storage ponds into the plant's raw water chamber, where a control valve maintains a stable operating level. Two 20 hp pumps then convey the water into the treatment process.

A pH suppressant (sulfuric acid) and coagulant are added to initiate advanced coagulation. The water passes through inline static mixers and a magnetic flow meter before entering a three-stage flocculation system, which enhances particle aggregation. Additional mixing occurs in break tanks prior to ultrafiltration (UF).

Pre-filtration removes larger flocculated particles before the water enters the UF system. The UF membranes, with a nominal pore size of 0.04 microns, remove nearly all suspended particulate matter.

The UF system includes continuous turbidity monitoring, with alarms triggered at 0.1 NTU and automatic shutdown at 0.29 NTU. Data is recorded at five-minute intervals and reported monthly.

UF permeate is directed to break tanks, where it serves as feed for the reverse osmosis (RO) system and as backwash water for UF membranes. Chlorine is added at low concentrations to control biological growth, followed by sodium bisulfite dosing to remove residual chlorine prior to RO treatment.

The RO process produces highly purified water. A controlled bypass of UF permeate is blended with RO-treated water to restore mineral content, achieve target hardness, and stabilize water chemistry. Seasonal adjustments are made to optimize finished water quality, particularly during periods of elevated organic content.

A sequestering agent is added prior to the clearwell to enhance water stability. Final treatment includes pH adjustment using sodium hydroxide and disinfection with chlorine. Fluoride is added at a concentration of 0.70 mg/L to support dental health.

Treated water quality is continuously monitored, including turbidity and chlorine residuals, in accordance with operating license requirements. The facility maintains 24-hour online monitoring of both UF-treated water and final effluent entering the distribution system.

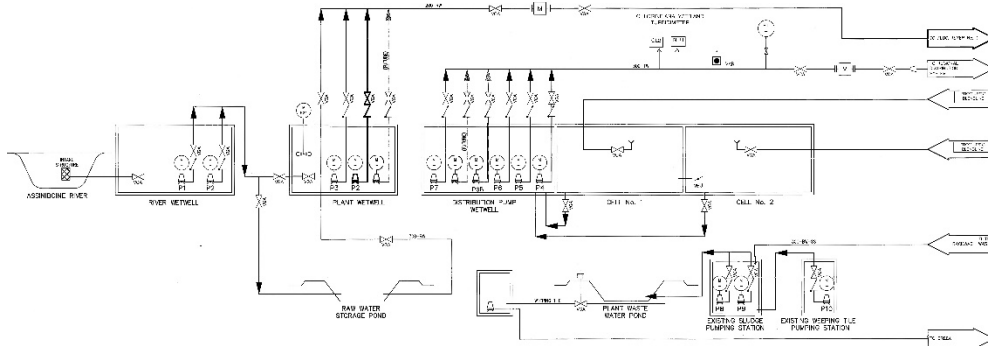


Figure 1 - Cartier WTP Process Flow Diagram 1 of 2

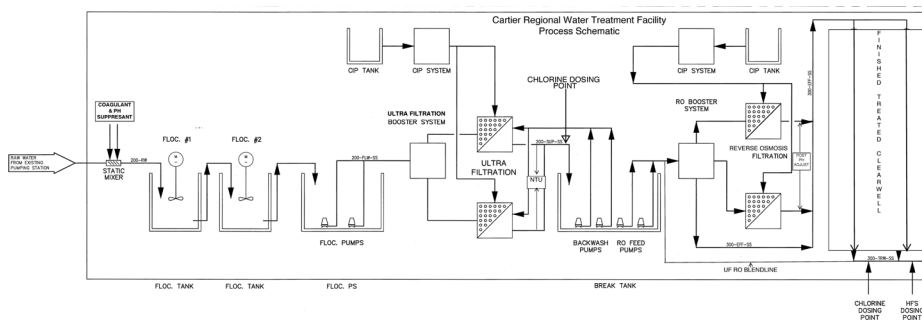


Figure 2 - Cartier WTP Flow Process Diagram 2 of 2

Headingley WTP

The Headingley WTP operates using a treatment approach similar to that of the Cartier WTP. Both facilities source water from the same supply and utilize membrane-based filtration processes.

Raw water enters the facility and passes through 500-micron pre-filters and two inline static mixers, where coagulant is applied and pH is adjusted using carbon dioxide. The water then flows through two mixing chambers, initiating coagulation and forming pin floc.

Pre-treated water is directed to the ultrafiltration (UF) feed chamber, where feed pumps convey it to the UF membranes. The UF system, with a nominal pore size of 0.04 microns, removes suspended particulate matter prior to reverse osmosis (RO) treatment.

Each UF skid is equipped with raw and permeate turbidimeters. Permeate turbidity alarms are triggered at 0.1 NTU, with automatic shutdown at 0.29 NTU. Turbidity is continuously monitored, with data recorded at five-minute intervals and reported monthly.

UF permeate is routed to break tanks, where it is used both as feedwater for the RO system and as backwash supply for the UF membranes. A low chlorine dose is applied to control biological growth, followed by sodium bisulfite addition upstream of the RO membranes to remove residual chlorine.

RO-treated water is blended with UF permeate to achieve a target finished water hardness of 40–80 mg/L as CaCO₃. Final treatment includes pH adjustment using sodium hydroxide and disinfection with chlorine gas prior to entering the clearwell.

Water remains in the clearwell for sufficient contact time to ensure effective disinfection before entering the pump chamber and distribution system. Free chlorine residuals are continuously monitored and recorded in monthly operational reports. See Figure 3 for a process overview.

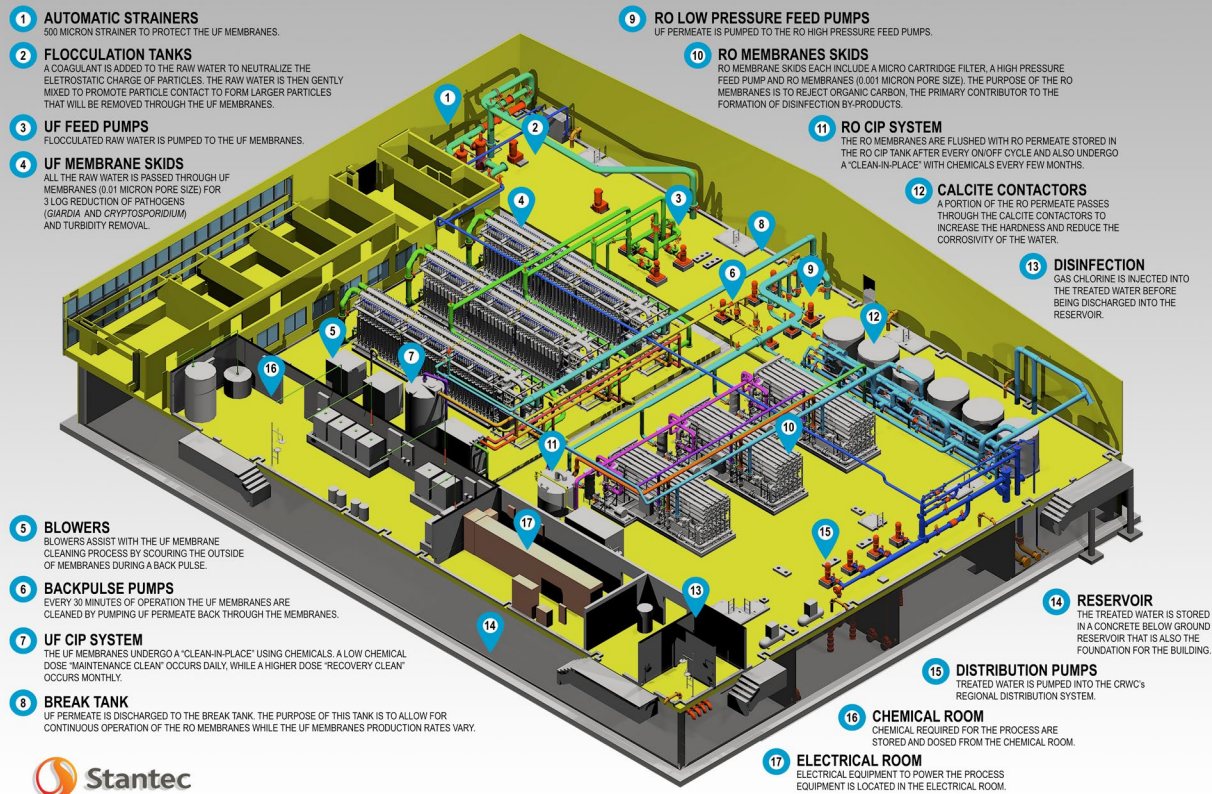


Figure 3 - Headingley WTP Treatment Process Overview

1.4. Distribution System

Cartier WTP (36.00)

Treated water from the reservoir is distributed throughout the Cartier Regional Public Water System using a combination of pumps, including one 5 hp jockey pump, two 25 hp duty pumps, one 30 hp duty pump, and one 50 hp standby pump. All pumps are controlled by variable frequency drives (VFDs) to maintain consistent system pressure and operational efficiency.

The distribution network is partially looped and interconnected with Rural Municipality (RM) distribution systems, providing improved reliability and redundancy. The system consists of approximately 108 kilometres of pipeline constructed from high-density polyethylene (HDPE) and polyvinyl chloride (PVC).

The Cartier Regional Public Water System supplies potable water to the Rural Municipalities of Cartier, Portage, and Grey. Refer to Figure 4 for the Cartier WTP service area.

Headingley WTP (89.40):

The Headingley WTP distributes treated water through three distribution pumps serving three primary headers.

- The **Centerport line** supplies the Rosser Reservoir (RM of Rosser). From there, water is pumped to the Stony Mountain Institute and the West St. Paul Reservoir, which serves the RM of West St. Paul.
- The **RM of Headingley line** supplies the Headingley Reservoir (RM of Headingley), the St. Francois Xavier Reservoir (RM of St. Francois Xavier), the RM of Rosser, and the Grosse Isle Reservoir.
- The **HCC/W.W.T.F. line** serves the Headingley Correctional Centre and the RM of Headingley Wastewater Treatment Facility.

The distribution network is partially looped in sections connecting to the RM of Rosser system, providing redundancy and reliability. The system extends approximately 118 kilometres and consists of high-density polyethylene (HDPE) and polyvinyl chloride (PVC) piping. Refer to Figure 5 for the Headingley WTP service area.

Figure 5 outlines the Headingley WTP service area.

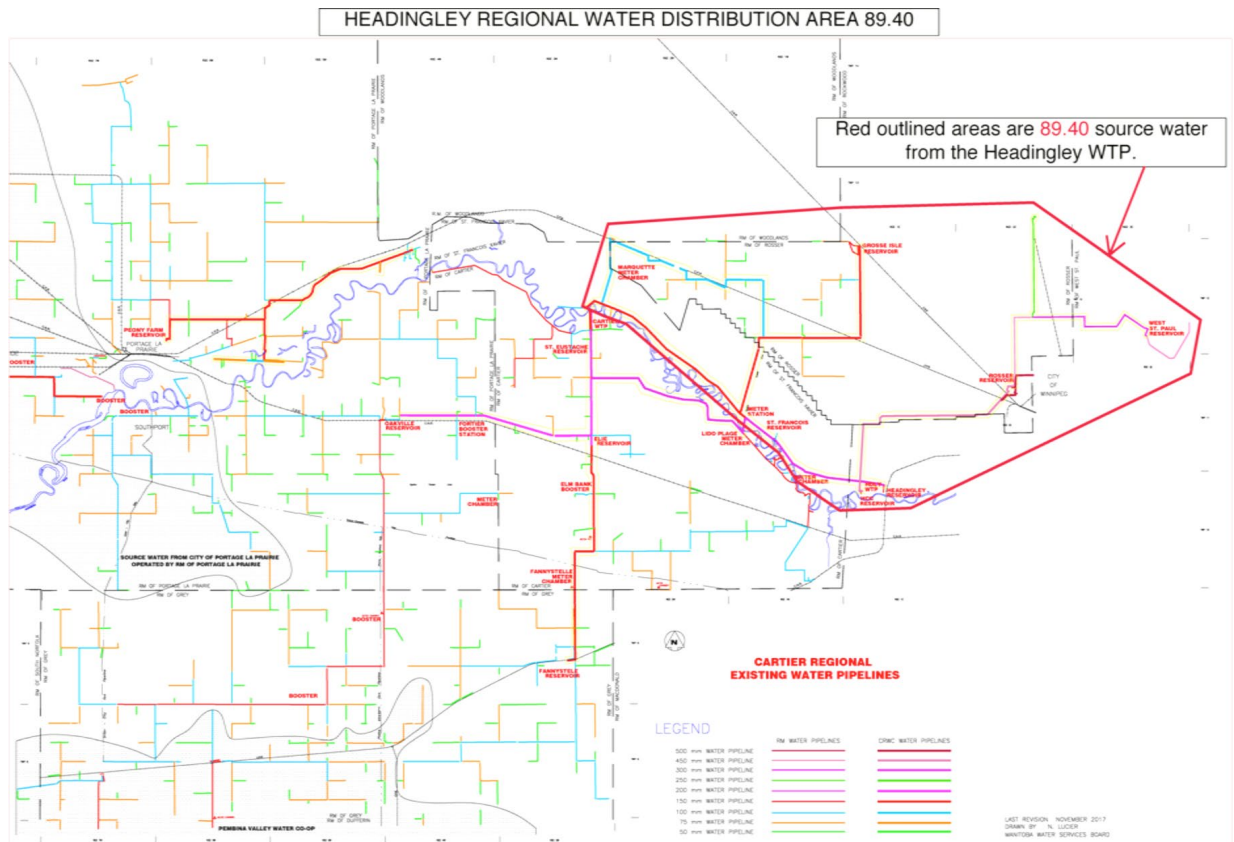


Figure 5 - 89.40 Headingley Regional Water Distribution System Map

Peony Farm (162.75)

The CRWC operates a facility near the Peony Farm area in the RM of Portage la Prairie. Treated water is purchased from the City of Portage la Prairie to supply the Peony Farm Reservoir.

An incoming chlorine analyzer monitors the chlorine residual in the supplied water, with supplemental chlorine added if required during filling. An outgoing chlorine analyzer ensures that treated water leaving the facility meets all regulatory requirements.

A standby generator provides backup power to maintain operations during electrical outages. Refer to Figure 6 for the Peony Farm Reservoir service area.

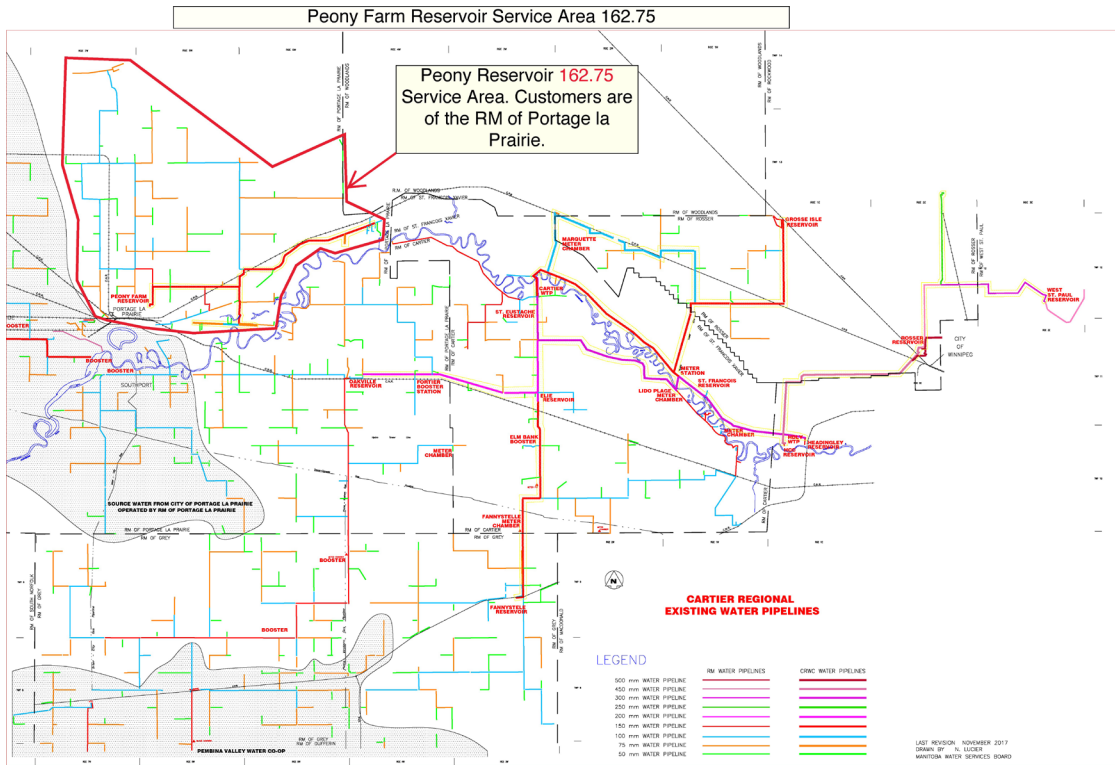


Figure 6 – 162.75 Peony Farm Service Area Map

1.5. Storage Reservoirs

<u>Location</u>	<u>Storage Reservoir</u>	<u>Capacity</u>
Cartier Regional WTP	Raw Storage Reservoir	120,000 M ³
Cartier Regional WTP	Treated Reservoir	3000 M ³
Elie Reservoir		960 M ³
St. Eustache Reservoir		76 M ³
Oakville Reservoir		670 M ³
Fannystelle Reservoir		150 M ³
Peony Farm Reservoir	Treated Reservoir	230 M ³
Headingley Regional WTP	Raw Storage Reservoir	135,107 M ³
Headingley Regional WTP	Treated Reservoir	4400 M ³
Headingley Reservoir		2400 M ³
SFX Reservoir		400 M ³
Grosse Isle Reservoir		400 M ³
Rosser Reservoir		7600 M ³
West St. Paul Reservoir		4809 M ³

1.6. Number of Connections, Population Served and Types of Water Users

The CRWC distribution system includes 5,219 metered service connections, supplying potable water to a population exceeding 15,289 residents across eight rural municipalities: Cartier, Portage la Prairie, St. François Xavier, Headingley, Grey, Rockwood, Rosser, and West St. Paul.

Table 1 - CRWC Population Served as of June 30, 2021 (latest available data)

All RMs combined	
BY METER SIZE	
5/8"	4967
3/4"	84
1"	95
1.5"	34
2"	333
3"	4
8"	2
TOTAL	5219
ESTIMATED PURPOSE	
Residential	4753
Commercial	386
Industrial	11
Other	69
TOTAL	5219

Over 500 m ³ /quarter	45
2 YEAR FORECAST	
Residential	653
Commercial	52
Other	13
	718
CONSUMPTION	1922826 cubic meters
ESTIMATED SERVED POP. *	15289
FARMS	
Colonies	14
Crops	40
Cattle all forms	23
Hogs	2
Poultry	3
Market	3
Other	1

* Also includes H.C.C. 549; S.M.I. 797 (per Wikipedia, rated population)

1.7 Classification and Certification

Table 2 - Classification and Certification for CRWC Facilities and Operators

Cartier Water Treatment Facility	Water Treatment Water Distribution	Class 4 Class 2
Headingley Water Treatment Facility	Water Treatment Water Distribution	Class 3 Class 2
Danielle Vaillant <i>Manager</i> <i>Cartier Regional Water Co-op</i>	Water Treatment Water Distribution Wastewater Treatment Wastewater Collection	Class 4 Class 2 Class 2 Class 2
Grant McGorman <i>Lead Operator</i> <i>Cartier Regional Water Treatment Facility</i>	Water Treatment Water Distribution Wastewater Treatment Wastewater Collection	Class 4 Class 2 Class 2 Class 2
Jason Tanguay <i>Operator</i> <i>Cartier Regional Water Treatment Facility</i>	Water Treatment Water Distribution Wastewater Treatment Wastewater Collection	Class 3 Class 2 Class 1 Class 1

Cartier Water Treatment Facility	Water Treatment Water Distribution	Class 4 Class 2
Headingley Water Treatment Facility	Water Treatment Water Distribution	Class 3 Class 2
Parker Page <i>Operator</i> Cartier Regional Water Treatment Facility	Water Treatment Water Distribution Wastewater Treatment Wastewater Collection	Class 2 Class 2 Class 1 Class 1
Scott Caister <i>Operator</i> Cartier Regional Water Treatment Facility	Water Treatment Water Distribution Wastewater Treatment Wastewater Collection	Class 1 Class 1 Class 1 Class 1
Paige Jepsen <i>Operator</i> Headingley Regional Water Treatment Facility	Water Treatment Water Distribution	Class 3 Class 2
Travis Reinsch <i>Operator</i> Headingley Regional Water Treatment Facility	Water Treatment Water Distribution	Class 2 Class 2
Blake Van Massenhoven <i>Operator</i> Headingley Regional Water Treatment Facility	Water Treatment Water Distribution	Class 1 Class 1

*Facility classification and Operator certification falls under The Environment Act's Water and Wastewater Facility Operators Regulation.

2. *Disinfection System*

The final step in water treatment is disinfection, which destroys or inactivates potential disease-causing organisms.

In accordance with the Drinking Water Safety Act license, the CRWC must maintain a measurable free chlorine residual as follows:

- **Minimum 0.5 mg/L** in water entering the distribution system after a minimum contact time of 20 minutes.
- **Minimum 0.1 mg/L** at all points within the distribution system at all times.

2.1. Type of Disinfection System

The Cartier and Headingley Regional Water Treatment Facilities employ chlorine gas for disinfection using Regal-brand gas chlorinator systems. Sodium hypochlorite may also be applied to reservoirs when required.

2.2. Equipment Redundancy and Monitoring

In accordance with the Drinking Water Safety Act, both facilities maintain continuous disinfection by keeping all necessary spare parts on site. A complete spare chlorinator is also available as a backup.

- **Cartier WTP:** Two identical trains of UF and RO membranes, each RO unit with a capacity of 30 L/s.
- **Headingley WTP:** Three trains of UF and RO membranes, each RO unit with a capacity of 50 L/s.

Disinfectant residuals are continuously monitored, with readings recorded every five minutes at both the treatment facilities and the reservoirs. Additional residual monitoring is conducted during routine bacterial sampling in the distribution system and documented on the appropriate forms. Monthly chlorination reports are submitted to the regional Drinking Water Officer.

2.3. Disinfectant Residual Performance

In 2025, the Cartier and Headingley Regional Public Water Systems met all regulatory requirements for monitoring and reporting disinfectant residuals, both at the Water Treatment Facilities and throughout the distribution system.

3. List of Water Quality Standards

The Province of Manitoba has adopted water quality standards based on the *Guidelines for Canadian Drinking Water Quality* developed by Health Canada. Health-based parameters define the maximum acceptable concentrations; values exceeding these limits may pose a health risk and require corrective action.

The 2025 water quality monitoring results for the Cartier and Headingley Regional Public Water Systems are summarized in the following tables.

Table 3 – Cartier WTP (36.00) Chemistry Results, 2025

Parameter	Standard	Monitoring Frequency	2025 Results
Bacterial: Total Coliform (TC) & E. coli (EC)	0 TC, 0 EC	Biweekly	100% passed
Disinfectant Residual – WTP	>0.5 mg/L	Continuous	100% compliance
Disinfectant Residual – Distribution	>0.1 mg/L	Continuous	100% compliance
Turbidity	0.10 NTU*	Continuous	100% compliance
Lead	0.005 mg/L	Annually	See Appendix E
Fluoride	1.5 mg/L	Annually	See Appendix E
Aluminum	0.1 mg/L	Annually	See Appendix E
Arsenic	0.01 mg/L	Annually	See Appendix E
Antimony	0.006 mg/L	Annually	See Appendix E
Barium	2 mg/L	Annually	See Appendix E

Parameter	Standard	Monitoring Frequency	2025 Results
Boron	5 mg/L	Annually	See Appendix E
Cadmium	0.005 mg/L	Annually	See Appendix E
Chromium	0.05 mg/L	Annually	See Appendix E
Copper	1 mg/L	Annually	See Appendix E
Iron	0.30 mg/L	Regularly	See Appendix E
Manganese	0.02 mg/L	Regularly	See Appendix E
Nitrate (as Nitrogen)	10 mg/L	Regularly	See Appendix E
Selenium	0.05 mg/L	Regularly	See Appendix E
Uranium	0.02 mg/L	Regularly	See Appendix E
Trihalomethanes (THMs)*	0.100 mg/L	Quarterly	See Appendix D
Haloacetic Acids (HAAs)**	0.08 mg/L	Quarterly	See Appendix D

Notes:

- *NTU: Nephelometric Turbidity Unit.*
- **Bacterial Testing:** Raw water, treated water leaving the WTP, and distribution system water are tested biweekly for Total Coliform (TC) and E. coli (EC). Presence indicates potential pathogenic organisms. See Appendices A for detailed results.
- ***THMs:** Trihalomethanes form when chlorine reacts with naturally occurring organic matter. Elevated levels have been linked to cancer; the provincial standard is 0.100 mg/L, based on the average of four quarterly samples. See Appendix D.
- ****HAAs:** Haloacetic acids form when chlorine reacts with naturally occurring organic matter. Elevated levels have been linked to cancer; the provincial standard is 0.08 mg/L, based on the average of four quarterly samples. See Appendix D.

A copy of the annual lab results can be found on our website at [CWTP Chemistry Results](#)

Table 4 – Headingley WTP (89.40) Chemistry Results, 2025

Parameter	Standard	Monitoring Frequency	2025 Results
Bacterial: Total Coliform (TC) & E. coli (EC)	0 TC, 0 EC	Biweekly	100% passed
Disinfectant Residual – WTP	>0.5 mg/L	Continuous	100% compliance
Disinfectant Residual – Distribution	>0.1 mg/L	Continuous	100% compliance
Turbidity	0.10 NTU*	Continuous	100% compliance
Lead	0.005 mg/L	Annually	See Appendix F
Fluoride	1.5 mg/L	Annually	See Appendix F
Aluminum	0.1 mg/L	Annually	See Appendix F
Arsenic	0.01 mg/L	Annually	See Appendix F
Antimony	0.006 mg/L	Annually	See Appendix F
Barium	2 mg/L	Annually	See Appendix F
Boron	5 mg/L	Annually	See Appendix F
Cadmium	0.005 mg/L	Annually	See Appendix F
Chromium	0.05 mg/L	Annually	See Appendix F

Parameter	Standard	Monitoring Frequency	2025 Results
Copper	1 mg/L	Annually	See Appendix F
Iron	0.30 mg/L	Regularly	See Appendix F
Manganese	0.02 mg/L	Regularly	See Appendix F
Nitrate (as Nitrogen)	10 mg/L	Regularly	See Appendix F
Selenium	0.05 mg/L	Regularly	See Appendix F
Uranium	0.02 mg/L	Regularly	See Appendix F
Trihalomethanes (THMs)*	0.100 mg/L	Quarterly	See Appendix D
Haloacetic Acids (HAAs)**	0.08 mg/L	Quarterly	See Appendix D

Notes:

- *NTU: Nephelometric Turbidity Unit.*
- **Bacterial Testing:** Raw water, treated water leaving the WTP, and distribution system water are tested biweekly for Total Coliform (TC) and E. coli (EC). Presence indicates potential pathogenic organisms. See Appendices B for detailed results.
- ***THMs:** Trihalomethanes form when chlorine reacts with naturally occurring organic matter. Elevated levels have been linked to cancer; the provincial standard is 0.100 mg/L, based on the average of four quarterly samples. See Appendix D.
- ****HAAs:** Haloacetic acids form when chlorine reacts with naturally occurring organic matter. Elevated levels have been linked to cancer; the provincial standard is 0.08 mg/L, based on the average of four quarterly samples. See Appendix D.

A copy of the annual lab results can be found on our website at [HWTP Chemistry Results](#)

Table 5 – Water Quality and Treatment Standards – Peony Farm Reservoir (PWS 162.75)

Parameter	Quality Standard
Total Coliform	Less than one total coliform bacteria detectable per 100 mL in all distributed water
E. coli	Less than one E. coli bacteria detectable per 100 mL in all distributed water
Chlorine residual	A free chlorine residual of at least 0.10 mg/L at all times at any point in the distribution system
Total trihalomethanes (THMs)	Less than or equal to 0.10 mg/L as locational annual average of quarterly samples – Sampled Every 2 Years
Total Haloacetic acids (HAAs)	Less than or equal to 0.08 mg/L as locational annual average of quarterly samples – Sampled Every 2 Years
Total Metals and Manganese (Distribution System)	One sample every two years at a mid-point in the distribution system
Lead	Less than or equal to 0.005 mg/L in the water distribution system – Sampling done upon direction of the DWO

A summary of analyses for these parameters is available in the City of Portage la Prairie annual water system report.

3.1 Result Improvement

The CRWC has monitored Trihalomethanes (THMs) over the past several years and has consistently met both provincial and federal guidelines. The THM standard of 0.1 mg/L is based on a running average of quarterly samples. Associated health risks from elevated THM levels are linked to long-term (lifetime) exposure.

4. *Water System Incidents and Corrective Actions*

No major water system incidents occurred in 2025. Minor operational variations were identified and corrected in accordance with standard operating procedures and regulatory reporting requirements.

5. *Additional Records Required*

As part of Manitoba Health's fluoridation program, funded by Manitoba Health, Seniors and Active Living, the Cartier WTP (36.00) conducts daily sampling from the treated water reservoir. Samples are tested on-site, and fluoride levels are recorded each day.

In addition, a 14-day composite sample is submitted bi-weekly for laboratory analysis. The recommended fluoride concentration in drinking water is 0.70 mg/L, with an operational range of 0.50–0.90 mg/L as established by Manitoba Health.

6. *Emergencies, Compliance Issues and Operational Issues*

In 2025, no emergencies or significant operational issues were reported for either the Cartier Regional PWS (36.00) or Headingley Regional PWS (89.40).

Peony Farm was inspected in 2025, with no recommendations or corrective actions required.

7. *Drinking Water Safety Orders on your System and Actions Taken in Response*

No Drinking Water Safety Orders were issued for any CRWC systems in 2025.

8. *Boil Water Advisories and Responses*

Two (2) Boil Water Advisories were issued in 2025:

- One advisory for the Cartier Regional PWS (36.00), which was resolved quickly;
- One advisory for the Headingley Regional PWS (89.40), issued due to a line repair and also resolved quickly

9. *Warnings Issued or Charges Laid on the Systems*

No warnings or charges were issued for the Cartier or Headingley Regional PWS in 2025 under The Drinking Water Safety Act.

10. *Major Expenses Incurred*

General

- Final SCADA upgrade payments: \$84,918.09
- Firewall upgrade: \$38,270.84
- New truck purchase: \$61,867.40

Cartier Water Treatment Plant (WTP)

- Lido Plage meter chamber repair: \$12,265.00
- Stainless steel pipe repairs and upgrades: \$12,634.37
- Peony reservoir programming upgrades: \$6,074.82
- VFD relocation and replacement: \$11,967.95
- New RO CIP tank: \$55,640.29
- Sludge pump replacement: \$15,511.79
- River wet well pump: \$42,318.50
- Pond blower: \$13,660.66

Headingley Water Treatment Plant (WTP)

- Headingley reservoir generator repairs: \$6,404.00
- Rosser reservoir VFD control upgrade: \$15,109.15
- RM of Rosser supply line repair: \$12,392.90
- Mixer parts: \$17,672.66
- Pipe upgrades for larger pump capacity: \$34,489.06
- Reverse osmosis pump repair: \$12,570.04
- Rosser mainline repair: \$18,120.00
- WSP/SMI supply line repair: \$8,390.55

11. *Future System Expansion and/or Increased Production*

The CRWC has identified several initiatives to support future growth and system reliability:

- The RM of West St. Paul will complete a reservoir expansion, after which CRWC will assume operational responsibility for the facility.
- Construction of the St. Eustache pipeline extension from the Cartier WTP to replace the existing St. Eustache reservoir.
- Pre-design work for the Fannystelle reservoir upgrade.
- Installation of a new 100 HP distribution pump at the Headingley WTP.

- Completion of a hydrogeological investigation to identify and develop a new groundwater supply.

Effective April 1, 2026, the bulk truck-fill water rate will increase from \$4.52 per cubic metre to \$4.64 per cubic metre.

Appendix A: Cartier WTP 36.00 2025 Bacteriological Results

Date Sampled	Sample Identification	TC	EC	Free Cl2	Total Cl2	Turbidity
31-Dec-24	CARTIER REGIONAL 1 - RAW	2	0	-	-	3.400
31-Dec-24	CARTIER REGIONAL 2 - TREATED	0	0	1.72	1.95	0.030
31-Dec-24	CARTIER REGIONAL 3 - DIST @ FANNYSTELLE RESERVOIR IN	0	0	1.40	1.56	0.070
31-Dec-24	CARTIER REGIONAL 3 - DIST - ELIE OUT	0	0	1.57	1.77	0.070
31-Dec-24	CARTIER REGIONAL 3 - DIST - FANNYSTELLE OUT	0	0	1.24	1.38	0.090
31-Dec-24	CARTIER REGIONAL 3 - DIST - OAKVILLE OUT	0	0	1.39	1.60	0.070
31-Dec-24	CARTIER REGIONAL 3 - DIST - ST. EUSTACHE OUT	0	0	1.56	1.75	0.070
14-Jan-25	CARTIER REGIONAL 1 - RAW	6	0	-	-	3.590
14-Jan-25	CARTIER REGIONAL 2 - TREATED	0	0	1.74	2.00	0.066
14-Jan-25	CARTIER REGIONAL 3 - DIST - ELIE RESERVOIR IN	0	0	1.78	1.97	0.060
14-Jan-25	CARTIER REGIONAL 3 - DIST - ELIE OUT	0	0	1.62	1.80	0.060
14-Jan-25	CARTIER REGIONAL 3 - DIST - FANNYSTELLE OUT	0	0	1.36	1.50	0.090
14-Jan-25	CARTIER REGIONAL 3 - DIST - OAKVILLE OUT	0	0	1.51	1.73	0.060
14-Jan-25	CARTIER REGIONAL 3 - DIST - ST. EUSTACHE OUT	0	0	1.69	1.86	0.070
28-Jan-25	CARTIER REGIONAL 1 - RAW	4	0	-	-	3.410
28-Jan-25	CARTIER REGIONAL 2 - TREATED	0	0	1.68	1.92	0.039
28-Jan-25	CARTIER REGIONAL 3 - DIST - ST. EUSTACHE RESERVOIR IN	0	0	1.64	1.80	0.040
28-Jan-25	CARTIER REGIONAL 3 - DIST - ELIE OUT	0	0	1.36	1.56	0.080
28-Jan-25	CARTIER REGIONAL 3 - DIST - FANNYSTELLE OUT	0	0	1.46	1.59	0.080
28-Jan-25	CARTIER REGIONAL 3 - DIST - OAKVILLE OUT	0	0	1.62	1.85	0.090
28-Jan-25	CARTIER REGIONAL 3 - DIST - ST. EUSTACHE OUT	0	0	1.56	1.72	0.070
11-Feb-25	CARTIER REGIONAL 1 - RAW	0	0	-	-	5.880
11-Feb-25	CARTIER REGIONAL 2 - TREATED	0	0	1.68	1.93	0.037
11-Feb-25	CARTIER REGIONAL 3- DIST @ -----> ELM BANK BOOSTER	0	0	1.49	1.64	0.062
11-Feb-25	CARTIER REGIONAL 3 - DIST - ELIE OUT	0	0	1.51	1.74	0.070
11-Feb-25	CARTIER REGIONAL 3 - DIST - FANNYSTELLE OUT	0	0	1.41	1.56	0.060
11-Feb-25	CARTIER REGIONAL 3 - DIST - OAKVILLE OUT	0	0	1.37	1.63	0.084
11-Feb-25	CARTIER REGIONAL 3 - DIST - ST. EUSTACHE OUT	0	0	1.42	1.61	0.092
25-Feb-25	CARTIER REGIONAL 1 - RAW	3	0	-	-	7.600
25-Feb-25	CARTIER REGIONAL 2 - TREATED	0	0	1.65	1.91	0.046

25-Feb-25	CARTIER REGIONAL 3 - DIST @ OAKVILLE RESERVOIR IN	0	0	1.53	1.74	0.070
25-Feb-25	CARTIER REGIONAL 3 - DIST - ELIE OUT	0	0	1.59	1.81	0.090
25-Feb-25	CARTIER REGIONAL 3 - DIST - FANNYSTELLE OUT	0	0	1.50	1.73	0.050
25-Feb-25	CARTIER REGIONAL 3 - DIST - OAKVILLE OUT	0	0	1.45	1.69	0.080
25-Feb-25	CARTIER REGIONAL 3 - DIST - ST. EUSTACHE OUT	0	0	1.63	1.84	0.040
11-Mar-25	CARTIER REGIONAL 1 - RAW	3	0	-	-	8.470
11-Mar-25	CARTIER REGIONAL 2 - TREATED	0	0	1.76	1.97	0.079
11-Mar-25	CARTIER REGIONAL 3 - DIST @ FANNYSTELLE RESERVOIR IN	0	0	1.56	1.66	0.060
11-Mar-25	CARTIER REGIONAL 3 - DIST - ELIE OUT	0	0	1.58	1.78	0.050
11-Mar-25	CARTIER REGIONAL 3 - DIST - FANNYSTELLE OUT	0	0	1.45	1.64	0.040
11-Mar-25	CARTIER REGIONAL 3 - DIST - OAKVILLE OUT	0	0	1.53	1.72	0.080
11-Mar-25	CARTIER REGIONAL 3 - DIST - ST. EUSTACHE OUT	0	0	1.52	1.78	0.060
25-Mar-25	CARTIER REGIONAL 1 - RAW	2	0	-	-	8.080
25-Mar-25	CARTIER REGIONAL 2 - TREATED	0	0	1.80	1.99	0.047
25-Mar-25	CARTIER REGIONAL 3 - DIST - ELIE RESERVOIR IN	0	0	1.76	1.98	0.110
25-Mar-25	CARTIER REGIONAL 3 - DIST - ELIE OUT	0	0	1.64	1.78	0.080
25-Mar-25	CARTIER REGIONAL 3 - DIST - FANNYSTELLE OUT	0	0	1.47	1.64	0.100
25-Mar-25	CARTIER REGIONAL 3 - DIST - OAKVILLE OUT	0	0	1.48	1.70	0.090
25-Mar-25	CARTIER REGIONAL 3 - DIST - ST. EUSTACHE OUT	0	0	1.66	1.86	0.090
08-Apr-25	CARTIER REGIONAL 1 - RAW	33	4	-	-	9.580
08-Apr-25	CARTIER REGIONAL 2 - TREATED	0	0	1.69	1.94	0.044
08-Apr-25	CARTIER REGIONAL 3 - DIST - ST. EUSTACHE RESERVOIR IN	0	0	1.71	1.91	0.100
08-Apr-25	CARTIER REGIONAL 3 - DIST - ELIE OUT	0	0	1.60	1.82	0.060
08-Apr-25	CARTIER REGIONAL 3 - DIST - FANNYSTELLE OUT	0	0	1.32	1.44	0.080
08-Apr-25	CARTIER REGIONAL 3 - DIST - OAKVILLE OUT	0	0	1.60	1.80	0.080
08-Apr-25	CARTIER REGIONAL 3 - DIST - ST. EUSTACHE OUT	0	0	1.72	1.97	0.100
22-Apr-25	CARTIER REGIONAL 1 - RAW	1	0	-	-	12.300
22-Apr-25	CARTIER REGIONAL 2 - TREATED	0	0	1.91	2.00+	0.054
22-Apr-25	CARTIER REGIONAL 3- DIST @ -----> FORTIER BOOSTER	0	0	1.91	2.12	0.080
22-Apr-25	CARTIER REGIONAL 3 - DIST - ELIE OUT	0	0	1.87	2.09	0.080
22-Apr-25	CARTIER REGIONAL 3 - DIST - FANNYSTELLE OUT	0	0	1.78	1.79	0.070
22-Apr-25	CARTIER REGIONAL 3 - DIST - OAKVILLE OUT	0	0	1.86	2.09	0.080
22-Apr-25	CARTIER REGIONAL 3 - DIST - ST. EUSTACHE OUT	0	0	1.86	2.11	0.070
06-May-25	CARTIER REGIONAL 1 - RAW	16	0	-	-	14.600
06-May-25	CARTIER REGIONAL 2 - TREATED	0	0	1.71	1.90	0.038
06-May-25	CARTIER REGIONAL 3 - DIST @ OAKVILLE RESERVOIR IN	0	0	1.44	1.62	0.060
06-May-25	CARTIER REGIONAL 3 - DIST - ELIE OUT	0	0	1.56	1.74	0.040
06-May-25	CARTIER REGIONAL 3 - DIST - FANNYSTELLE OUT	0	0	1.61	1.75	0.080
06-May-25	CARTIER REGIONAL 3 - DIST - OAKVILLE OUT	0	0	1.42	1.60	0.070
06-May-25	CARTIER REGIONAL 3 - DIST - ST. EUSTACHE OUT	0	0	1.58	1.77	0.060

20-May-25	CARTIER REGIONAL 1 - RAW	73	1	-	-	
20-May-25	CARTIER REGIONAL 2 - TREATED	0	0	1.28	2.0+	0.035
20-May-25	CARTIER REGIONAL 3 - DIST @ FANNYSTELLE RESERVOIR IN	0	0	1.12	1.29	0.090
20-May-25	CARTIER REGIONAL 3 - DIST - ELIE OUT	0	0	1.48	1.65	0.080
20-May-25	CARTIER REGIONAL 3 - DIST - FANNYSTELLE OUT	0	0	1.14	1.22	0.070
20-May-25	CARTIER REGIONAL 3 - DIST - OAKVILLE OUT	0	0	1.41	1.56	0.090
20-May-25	CARTIER REGIONAL 3 - DIST - ST. EUSTACHE OUT	0	0	1.70	1.86	0.090
03-Jun-25	CARTIER REGIONAL 1 - RAW	133	5	-	-	14.500
03-Jun-25	CARTIER REGIONAL 2 - TREATED	0	0	1.49	1.65	0.039
03-Jun-25	CARTIER REGIONAL 3 - DIST - ELIE RESERVOIR IN	0	0	1.47	1.63	0.070
03-Jun-25	CARTIER REGIONAL 3 - DIST - ELIE OUT	0	0	1.48	1.65	0.080
03-Jun-25	CARTIER REGIONAL 3 - DIST - FANNYSTELLE OUT	0	0	1.36	1.46	0.050
03-Jun-25	CARTIER REGIONAL 3 - DIST - OAKVILLE OUT	0	0	1.60	1.74	0.060
03-Jun-25	CARTIER REGIONAL 3 - DIST - ST. EUSTACHE OUT	0	0	1.56	1.75	0.060
17-Jun-25	CARTIER REGIONAL 1 - RAW	435	3	-	-	
17-Jun-25	CARTIER REGIONAL 2 - TREATED	0	0	1.35	1.50	0.049
17-Jun-25	CARTIER REGIONAL 3 - DIST - ST. EUSTACHE RESERVOIR IN	0	0	1.38	1.54	0.090
17-Jun-25	CARTIER REGIONAL 3 - DIST - ELIE OUT	0	0	1.19	1.31	0.090
17-Jun-25	CARTIER REGIONAL 3 - DIST - FANNYSTELLE OUT	0	0	1.11	1.27	0.100
17-Jun-25	CARTIER REGIONAL 3 - DIST - OAKVILLE OUT	0	0	1.41	1.54	0.090
17-Jun-25	CARTIER REGIONAL 3 - DIST - ST. EUSTACHE OUT	0	0	1.24	1.49	0.090
01-Jul-25	CARTIER REGIONAL 1 - RAW	649	13	-	-	19.100
01-Jul-25	CARTIER REGIONAL 2 - TREATED	0	0	1.47	1.70	0.052
01-Jul-25	CARTIER REGIONAL 3- DIST @ -----> ELM BANK BOOSTER	0	0	1.16	1.38	0.080
01-Jul-25	CARTIER REGIONAL 3 - DIST - ELIE OUT	0	0	1.21	1.42	0.080
01-Jul-25	CARTIER REGIONAL 3 - DIST - FANNYSTELLE OUT	0	0	1.14	1.29	0.090
01-Jul-25	CARTIER REGIONAL 3 - DIST - OAKVILLE OUT	0	0	1.23	1.41	0.090
01-Jul-25	CARTIER REGIONAL 3 - DIST - ST. EUSTACHE OUT	0	0	1.33	1.51	0.090
15-Jul-25	CARTIER REGIONAL 1 - RAW	1300	6	-	-	29.600
15-Jul-25	CARTIER REGIONAL 2 - TREATED	0	0	1.63	1.85	0.042
15-Jul-25	CARTIER REGIONAL 3 - DIST @ OAKVILLE RESERVOIR IN	0	0	1.53	1.79	0.040
15-Jul-25	CARTIER REGIONAL 3 - DIST - ELIE OUT	0	0	1.43	1.60	0.040
15-Jul-25	CARTIER REGIONAL 3 - DIST - FANNYSTELLE OUT	0	0	1.22	1.43	0.060
15-Jul-25	CARTIER REGIONAL 3 - DIST - OAKVILLE OUT	0	0	1.50	1.66	0.060
15-Jul-25	CARTIER REGIONAL 3 - DIST - ST. EUSTACHE OUT	0	0	1.51	1.73	0.080
29-Jul-25	CARTIER REGIONAL 1 - RAW	517	1	-	-	
29-Jul-25	CARTIER REGIONAL 2 - TREATED	0	0	1.80	2.0+	0.067
29-Jul-25	CARTIER REGIONAL 3 - DIST @ FANNYSTELLE RESERVOIR IN	0	0	1.35	1.56	0.080
29-Jul-25	CARTIER REGIONAL 3 - DIST - ELIE OUT	0	0	1.48	1.67	0.070
29-Jul-25	CARTIER REGIONAL 3 - DIST - FANNYSTELLE OUT	0	0	1.35	1.62	0.080

29-Jul-25	CARTIER REGIONAL 3 - DIST - OAKVILLE OUT	0	0	1.47	1.63	0.080
29-Jul-25	CARTIER REGIONAL 3 - DIST - ST. EUSTACHE OUT	0	0	1.71	1.87	0.090
12-Aug-25	CARTIER REGIONAL 1 - RAW	250	17	-	-	10.800
12-Aug-25	CARTIER REGIONAL 2 - TREATED	0	0	1.83	2.0+	0.053
12-Aug-25	CARTIER REGIONAL 3 - DIST - ELIE RESERVOIR IN	0	0	1.66	1.88	0.070
12-Aug-25	CARTIER REGIONAL 3 - DIST - ELIE OUT	0	0	1.46	1.83	0.050
12-Aug-25	CARTIER REGIONAL 3 - DIST - FANNYSTELLE OUT	0	0	1.40	1.57	0.050
12-Aug-25	CARTIER REGIONAL 3 - DIST - OAKVILLE OUT	0	0	1.47	1.71	0.050
12-Aug-25	CARTIER REGIONAL 3 - DIST - ST. EUSTACHE OUT	0	0	1.62	1.82	0.050
26-Aug-25	CARTIER REGIONAL 1 - RAW	276	3	-	-	8.810
26-Aug-25	CARTIER REGIONAL 2 - TREATED	0	0	1.81	2.0+	0.042
26-Aug-25	CARTIER REGIONAL 3 - DIST - ST. EUSTACHE RESERVOIR IN	0	0	1.61	1.82	0.060
26-Aug-25	CARTIER REGIONAL 3 - DIST - ELIE OUT	0	0	1.47	1.64	0.060
26-Aug-25	CARTIER REGIONAL 3 - DIST - FANNYSTELLE OUT	0	0	1.35	1.47	0.060
26-Aug-25	CARTIER REGIONAL 3 - DIST - OAKVILLE OUT	0	0	1.47	1.59	0.050
26-Aug-25	CARTIER REGIONAL 3 - DIST - ST. EUSTACHE OUT	0	0	1.67	1.84	0.080
09-Sep-25	CARTIER REGIONAL 1 - RAW	411	11	-	-	4.890
09-Sep-25	CARTIER REGIONAL 2 - TREATED	0	0	1.83	2.0+	0.040
09-Sep-25	CARTIER REGIONAL 3 - DIST @ -----> FORTIER BOOSTER	0	0	1.69	1.88	0.100
09-Sep-25	CARTIER REGIONAL 3 - DIST - ELIE OUT	0	0	1.55	1.72	0.080
09-Sep-25	CARTIER REGIONAL 3 - DIST - FANNYSTELLE OUT	0	0	1.31	1.47	0.090
09-Sep-25	CARTIER REGIONAL 3 - DIST - OAKVILLE OUT	0	0	1.56	1.71	0.090
09-Sep-25	CARTIER REGIONAL 3 - DIST - ST. EUSTACHE OUT	0	0	1.65	1.81	0.080
23-Sep-25	CARTIER REGIONAL 1 - RAW	313	115	-	-	2.180
23-Sep-25	CARTIER REGIONAL 2 - TREATED	0	0	1.70	1.89	0.043
23-Sep-25	CARTIER REGIONAL 3 - DIST @ OAKVILLE RESERVOIR IN	0	0	1.56	1.71	0.070
23-Sep-25	CARTIER REGIONAL 3 - DIST - ELIE OUT	0	0	1.49	1.64	0.090
23-Sep-25	CARTIER REGIONAL 3 - DIST - FANNYSTELLE OUT	0	0	1.35	1.46	0.070
23-Sep-25	CARTIER REGIONAL 3 - DIST - OAKVILLE OUT	0	0	1.50	1.69	0.100
23-Sep-25	CARTIER REGIONAL 3 - DIST - ST. EUSTACHE OUT	0	0	1.57	1.78	0.100
07-Oct-25	CARTIER REGIONAL 1 - RAW	326	59	-	-	5.16
07-Oct-25	CARTIER REGIONAL 2 - TREATED	0	0	1.83	2.07	0.46
07-Oct-25	CARTIER REGIONAL 3 - DIST @ FANNYSTELLE RESERVOIR IN	0	0	1.58	1.80	0.101
07-Oct-25	CARTIER REGIONAL 3 - DIST - ELIE OUT	0	0	1.72	1.84	0.117
07-Oct-25	CARTIER REGIONAL 3 - DIST - FANNYSTELLE OUT	0	0	1.57	1.78	0.088
07-Oct-25	CARTIER REGIONAL 3 - DIST - OAKVILLE OUT	0	0	1.50	1.79	0.097
07-Oct-25	CARTIER REGIONAL 3 - DIST - ST. EUSTACHE OUT	0	0	1.72	1.87	0.068
21-Oct-25	CARTIER REGIONAL 1 - RAW	114	20	-	-	3.130
21-Oct-25	CARTIER REGIONAL 2 - TREATED	0	0	1.74	1.92	0.042
21-Oct-25	CARTIER REGIONAL 3 - DIST - ELIE RESERVOIR IN	0	0	1.72	1.88	0.050
21-Oct-25	CARTIER REGIONAL 3 - DIST - ELIE OUT	0	0	1.50	1.68	0.060

21-Oct-25	CARTIER REGIONAL 3 - DIST - FANNYSTELLE OUT	0	0	1.48	1.62	
21-Oct-25	CARTIER REGIONAL 3 - DIST - OAKVILLE OUT	0	0	1.45	1.71	0.060
21-Oct-25	CARTIER REGIONAL 3 - DIST - ST. EUSTACHE OUT	0	0	1.62	1.79	0.040
04-Nov-25	CARTIER REGIONAL 1 - RAW	23	4	-	-	4.780
04-Nov-25	CARTIER REGIONAL 2 - TREATED	0	0	1.76	2.0+	0.042
04-Nov-25	CARTIER REGIONAL 3 - DIST - ST. EUSTACHE RESERVOIR IN	0	0	1.72	1.93	0.050
04-Nov-25	CARTIER REGIONAL 3 - DIST - ELIE OUT	0	0	1.69	1.88	0.060
04-Nov-25	CARTIER REGIONAL 3 - DIST - FANNYSTELLE OUT	0	0	1.55	1.73	0.050
04-Nov-25	CARTIER REGIONAL 3 - DIST - OAKVILLE OUT	0	0	1.65	1.89	0.040
04-Nov-25	CARTIER REGIONAL 3 - DIST - ST. EUSTACHE OUT	0	0	1.70	1.89	0.050
18-Nov-25	CARTIER REGIONAL 1 - RAW	34	19	-	-	12.900
18-Nov-25	CARTIER REGIONAL 2 - TREATED	0	0	1.23	1.45	0.028
18-Nov-25	CARTIER REGIONAL 3- DIST @ -----> ELM BANK BOOSTER	0	0	1.18	1.38	0.070
18-Nov-25	CARTIER REGIONAL 3 - DIST - ELIE OUT	0	0	1.18	1.35	0.050
18-Nov-25	CARTIER REGIONAL 3 - DIST - FANNYSTELLE OUT	0	0	1.19	1.39	0.060
18-Nov-25	CARTIER REGIONAL 3 - DIST - OAKVILLE OUT	0	0	1.19	1.32	0.070
18-Nov-25	CARTIER REGIONAL 3 - DIST - ST. EUSTACHE OUT	0	0	1.22	1.36	0.040
02-Dec-25	CARTIER REGIONAL 1 - RAW	10	2	-	-	10.200
02-Dec-25	CARTIER REGIONAL 2 - TREATED	0	0	1.47	1.66	0.025
02-Dec-25	CARTIER REGIONAL 3 - DIST @ OAKVILLE RESERVOIR IN	0	0	1.30	1.58	0.120
02-Dec-25	CARTIER REGIONAL 3 - DIST - ELIE OUT	0	0	1.31	1.68	0.130
02-Dec-25	CARTIER REGIONAL 3 - DIST - FANNYSTELLE OUT	0	0	1.09	1.31	0.140
02-Dec-25	CARTIER REGIONAL 3 - DIST - OAKVILLE OUT	0	0	1.39	1.71	0.100
02-Dec-25	CARTIER REGIONAL 3 - DIST - ST. EUSTACHE OUT	0	0	1.34	1.50	0.190
16-Dec-25	CARTIER REGIONAL 1 - RAW	2	0	-	-	5.800
16-Dec-25	CARTIER REGIONAL 2 - TREATED	0	0	1.73	1.97	0.037
16-Dec-25	CARTIER REGIONAL 3 - DIST @ FANNYSTELLE RESERVOIR IN	0	0	1.22	1.43	0.080
16-Dec-25	CARTIER REGIONAL 3 - DIST - ELIE OUT	0	0	1.50	1.71	0.070
30-Dec-25	CARTIER REGIONAL 1 - RAW	5	1	0.00	0.00	6.890
30-Dec-25	CARTIER REGIONAL 2 - TREATED	0	0	1.74	1.97	0.069
30-Dec-25	CARTIER REGIONAL 3 - DIST @ ELIE RESERVOIR IN	0	0	1.50	1.74	0.060
30-Dec-25	CARTIER REGIONAL 3 - DIST - ELIE OUT	0	0	1.40	1.53	0.060
30-Dec-25	CARTIER REGIONAL 3 - DIST - FANNYSTELLE OUT	0	0	1.41	1.61	0.060
30-Dec-25	CARTIER REGIONAL 3 - DIST - OAKVILLE OUT	0	0	1.55	1.73	0.070
30-Dec-25	CARTIER REGIONAL 3 - DIST - ST. EUSTACHE OUT	0	0	1.70	1.86	0.070

Appendix B: Headingley WTP 89.40 2025 Bacteriological Result

Date Sampled	Sample Identification	TC	EC	Free Cl2	Total Cl2	Turbidity
7-Jan-25	HEADINGLEY REGIONAL 1 - RAW	20	0	-	-	7.01
7-Jan-25	HEADINGLEY REGIONAL 2 - TREATED	0	0	1.91	2.00	0.06
7-Jan-25	HEADINGLEY REGIONAL 3 - DIST @ Bayer Crop Science	0	0	1.38	1.51	0.09
7-Jan-25	HEADINGLEY REGIONAL 3 - DIST - GI OUT	0	0	0.83	0.96	0.07
7-Jan-25	HEADINGLEY REGIONAL 3 - DIST - ROSSER OUT	0	0	1.45	1.64	0.06
6-Jan-25	HEADINGLEY REGIONAL 3 - DIST - ST. FX OUT	0	0	1.24	1.40	0.10
6-Jan-25	HEADINGLEY REGIONAL 3 - DIST - HDLY OUT	0	0	1.58	1.85	0.07
7-Jan-25	HEADINGLEY REGIONAL 3 - DIST - WSP OUT	0	0	1.30	1.43	0.07
21-Jan-25	HEADINGLEY REGIONAL 1 - RAW	9	0	-	-	10.10
21-Jan-25	HEADINGLEY REGIONAL 2 - TREATED	0	0	1.73	1.94	0.05
21-Jan-25	HEADINGLEY REGIONAL 3 - DIST @ WSP IN	0	0	1.33	1.50	0.05
21-Jan-25	HEADINGLEY REGIONAL 3 - DIST - GI OUT	0	0	0.83	1.01	0.08
21-Jan-25	HEADINGLEY REGIONAL 3 - DIST - ROSSER OUT	0	0	1.51	1.55	0.04
20-Jan-25	HEADINGLEY REGIONAL 3 - DIST - ST. FX OUT	0	0	1.34	1.50	0.17
20-Jan-25	HEADINGLEY REGIONAL 3 - DIST - HDLY OUT	0	0	1.67	1.81	0.05
21-Jan-25	HEADINGLEY REGIONAL 3 - DIST - WSP OUT	0	0	1.24	1.35	0.05
4-Feb-25	HEADINGLEY REGIONAL 1 - RAW	17	0			11.00
4-Feb-25	HEADINGLEY REGIONAL 2 - TREATED	0	0	1.54	1.71	0.07
3-Feb-25	HEADINGLEY REGIONAL 3 - DIST @ HDLY IN	0	0	1.97	2.12	0.08
4-Feb-25	HEADINGLEY REGIONAL 3 - DIST - GI OUT	0	0	1.07	1.19	0.14
4-Feb-25	HEADINGLEY REGIONAL 3 - DIST - ROSSER OUT	0	0	1.23	1.34	0.14
3-Feb-25	HEADINGLEY REGIONAL 3 - DIST - ST. FX OUT	0	0	1.36	1.50	0.08
3-Feb-25	HEADINGLEY REGIONAL 3 - DIST - HDLY OUT	0	0	1.80	1.97	0.08
4-Feb-25	HEADINGLEY REGIONAL 3 - DIST - WSP OUT	0	0	1.18	1.28	0.06
18-Feb-25	HEADINGLEY REGIONAL 1 - RAW	10	0	-	-	10.00
18-Feb-25	HEADINGLEY REGIONAL 2 - TREATED	0	0	1.65	1.85	0.06
18-Feb-25	HEADINGLEY REGIONAL 3 - DIST @ ROSSER IN	0	0	1.54	1.75	0.04
18-Feb-25	HEADINGLEY REGIONAL 3 - DIST - GI OUT	0	0	1.18	1.30	0.18
18-Feb-25	HEADINGLEY REGIONAL 3 - DIST - ROSSER OUT	0	0	1.38	1.57	0.14
17-Feb-25	HEADINGLEY REGIONAL 3 - DIST - ST. FX OUT	0	0	1.33	1.45	0.05
17-Feb-25	HEADINGLEY REGIONAL 3 - DIST - HDLY OUT	0	0	1.48	1.63	0.07
18-Feb-25	HEADINGLEY REGIONAL 3 - DIST - WSP OUT	0	0	1.15	1.23	0.14
4-Mar-25	HEADINGLEY REGIONAL 1 - RAW	11	0	-	-	9.61
4-Mar-25	HEADINGLEY REGIONAL 2 - TREATED	0	0	1.75	1.96	0.04
3-Mar-25	HEADINGLEY REGIONAL 3 - DIST @ SFX IN	0	0	1.36	1.54	0.05
4-Mar-25	HEADINGLEY REGIONAL 3 - DIST - GI OUT	0	0	1.00	1.18	0.07
4-Mar-25	HEADINGLEY REGIONAL 3 - DIST - ROSSER OUT	0	0	1.48	1.64	0.07

3-Mar-25	HEADINGLEY REGIONAL 3 - DIST - ST. FX OUT	0	0	1.38	1.54	0.05
3-Mar-25	HEADINGLEY REGIONAL 3 - DIST - HDLY OUT	0	0	1.78	2.00	0.04
4-Mar-25	HEADINGLEY REGIONAL 3 - DIST - WSP OUT	0	0	1.33	1.42	0.08
18-Mar-25	HEADINGLEY REGIONAL 1 - RAW	4	1	-	-	8.28
18-Mar-25	HEADINGLEY REGIONAL 2 - TREATED	0	0	1.82	2.00	0.05
18-Mar-25	HEADINGLEY REGIONAL 3 - DIST @ GI IN	0	0	1.31	1.52	0.09
18-Mar-25	HEADINGLEY REGIONAL 3 - DIST - GI OUT	0	0	1.11	1.25	0.07
18-Mar-25	HEADINGLEY REGIONAL 3 - DIST - ROSSER OUT	0	0	1.38	1.66	0.05
17-Mar-25	HEADINGLEY REGIONAL 3 - DIST - ST. FX OUT	0	0	1.40	1.59	0.10
17-Mar-25	HEADINGLEY REGIONAL 3 - DIST - HDLY OUT	0	0	1.38	1.62	0.07
18-Mar-25	HEADINGLEY REGIONAL 3 - DIST - WSP OUT	0	0	1.42	1.54	0.05
31-Mar-25	HEADINGLEY REGIONAL 1 - RAW	10	0	-	-	4.87
31-Mar-25	HEADINGLEY REGIONAL 2 - TREATED	0	0	1.61	1.81	0.07
31-Mar-25	HEADINGLEY REGIONAL 3 - DIST @ HCC IN	0	0	1.72	1.80	0.08
30-Mar-25	HEADINGLEY REGIONAL 3 - DIST - GI OUT	0	0	1.22	1.42	0.09
30-Mar-25	HEADINGLEY REGIONAL 3 - DIST - ROSSER OUT	0	0	1.44	1.56	0.08
31-Mar-25	HEADINGLEY REGIONAL 3 - DIST - ST. FX OUT	0	0	1.32	1.48	0.05
31-Mar-25	HEADINGLEY REGIONAL 3 - DIST - HDLY OUT	0	0	1.71	1.82	0.04
30-Mar-25	HEADINGLEY REGIONAL 3 - DIST - WSP OUT	0	0	1.36	1.39	0.08
15-Apr-25	HEADINGLEY REGIONAL 1 - RAW	17	1	-	-	10.30
15-Apr-25	HEADINGLEY REGIONAL 2 - TREATED	0	0	1.58	1.75	0.05
15-Apr-25	HEADINGLEY REGIONAL 3 - DIST @ WWTP IN	0	0	1.72	1.85	0.04
15-Apr-25	HEADINGLEY REGIONAL 3 - DIST - GI OUT	0	0	1.38	1.50	0.04
15-Apr-25	HEADINGLEY REGIONAL 3 - DIST - ROSSER OUT	0	0	1.21	1.32	0.04
14-Apr-25	HEADINGLEY REGIONAL 3 - DIST - ST. FX OUT	0	0	1.34	1.52	0.05
14-Apr-25	HEADINGLEY REGIONAL 3 - DIST - HDLY OUT	0	0	1.49	1.71	0.06
15-Apr-25	HEADINGLEY REGIONAL 3 - DIST - WSP OUT	0	0	1.27	1.42	0.05
29-Apr-25	HEADINGLEY REGIONAL 1 - RAW	63	0	-	-	39.70
29-Apr-25	HEADINGLEY REGIONAL 2 - TREATED	0	0	1.27	1.46	0.06
29-Apr-25	HEADINGLEY REGIONAL 3 - DIST @ BAYER	0	0	1.84	2.12	0.07
29-Apr-25	HEADINGLEY REGIONAL 3 - DIST - GI OUT	0	0	1.37	1.58	0.09
29-Apr-25	HEADINGLEY REGIONAL 3 - DIST - ROSSER OUT	0	0	1.16	1.30	0.05
29-Apr-25	HEADINGLEY REGIONAL 3 - DIST - ST. FX OUT	0	0	1.31	1.48	0.04
29-Apr-25	HEADINGLEY REGIONAL 3 - DIST - HDLY OUT	0	0	1.23	1.39	0.28
29-Apr-25	HEADINGLEY REGIONAL 3 - DIST - WSP OUT	0	0	1.32	1.61	0.05
12-May-25	HEADINGLEY REGIONAL 1 - RAW	20	2	-	-	17.80
12-May-25	HEADINGLEY REGIONAL 2 - TREATED	0	0	1.39	1.59	0.07
13-May-25	HEADINGLEY REGIONAL 3 - DIST @ WSP IN	0	0	0.91	1.08	0.06
13-May-25	HEADINGLEY REGIONAL 3 - DIST - GI OUT	0	0	1.42	1.58	0.05
13-May-25	HEADINGLEY REGIONAL 3 - DIST - ROSSER OUT	0	0	1.02	1.18	0.07
12-May-25	HEADINGLEY REGIONAL 3 - DIST - ST. FX OUT	0	0	1.42	1.65	0.06

12-May-25	HEADINGLEY REGIONAL 3 - DIST - HDLY OUT	0	0	1.36	1.55	0.07
13-May-25	HEADINGLEY REGIONAL 3 - DIST - WSP OUT	0	0	0.84	1.02	0.08
27-May-25	HEADINGLEY REGIONAL 1 - RAW	0	0	-	-	38.70
27-May-25	HEADINGLEY REGIONAL 2 - TREATED	0	0	1.42	1.58	0.15
26-May-25	HEADINGLEY REGIONAL 3 - DIST @ HDLY IN	0	0	1.69	1.91	0.16
27-May-25	HEADINGLEY REGIONAL 3 - DIST - GI OUT	0	0	0.94	1.05	0.14
27-May-25	HEADINGLEY REGIONAL 3 - DIST - ROSSER OUT	0	0	1.07	1.19	0.15
26-May-25	HEADINGLEY REGIONAL 3 - DIST - ST. FX OUT	0	0	1.31	1.52	0.22
26-May-25	HEADINGLEY REGIONAL 3 - DIST - HDLY OUT	0	0	1.51	1.70	0.14
27-May-25	HEADINGLEY REGIONAL 3 - DIST - WSP OUT	0	0	0.83	0.97	0.18
10-Jun-25	HEADINGLEY REGIONAL 1 - RAW	186	10	-	-	9.64
10-Jun-25	HEADINGLEY REGIONAL 2 - TREATED	0	0	1.99	2.00	0.10
10-Jun-25	HEADINGLEY REGIONAL 3 - DIST @ ROSSER IN	0	0	1.80	2.00	0.11
10-Jun-25	HEADINGLEY REGIONAL 3 - DIST - GI OUT	0	0	0.88	1.05	0.08
10-Jun-25	HEADINGLEY REGIONAL 3 - DIST - ROSSER OUT	0	0	0.89	1.30	0.11
9-Jun-25	HEADINGLEY REGIONAL 3 - DIST - ST. FX OUT	0	0	1.41	1.61	0.19
9-Jun-25	HEADINGLEY REGIONAL 3 - DIST - HDLY OUT	0	0	1.57	1.81	0.20
10-Jun-25	HEADINGLEY REGIONAL 3 - DIST - WSP OUT	0	0	0.87	1.02	0.12
24-Jun-25	HEADINGLEY REGIONAL 1 - RAW	330	26	-	-	10.50
24-Jun-25	HEADINGLEY REGIONAL 2 - TREATED	0	0	1.76	1.95	0.11
24-Jun-25	HEADINGLEY REGIONAL 3 - DIST @ SFX IN	0	0	1.57	1.75	0.12
23-Jun-25	HEADINGLEY REGIONAL 3 - DIST - GI OUT	0	0	0.70	0.85	0.10
23-Jun-25	HEADINGLEY REGIONAL 3 - DIST - ROSSER OUT	0	0	1.39	1.54	0.11
24-Jun-25	HEADINGLEY REGIONAL 3 - DIST - ST. FX OUT	0	0	1.42	1.55	0.14
24-Jun-25	HEADINGLEY REGIONAL 3 - DIST - HDLY OUT	0	0	1.64	1.81	0.12
23-Jun-25	HEADINGLEY REGIONAL 3 - DIST - WSP OUT	0	0	1.40	1.70	0.12
7-Jul-25	HEADINGLEY REGIONAL 1 - RAW	172	3	-	-	20.00
7-Jul-25	HEADINGLEY REGIONAL 2 - TREATED	0	0	1.78	1.96	0.16
6-Jul-25	HEADINGLEY REGIONAL 3 - DIST @ GI IN	0	0	1.11	1.23	0.16
6-Jul-25	HEADINGLEY REGIONAL 3 - DIST - GI OUT	0	0	0.72	0.88	0.15
6-Jul-25	HEADINGLEY REGIONAL 3 - DIST - ROSSER OUT	0	0	1.46	1.64	0.14
7-Jul-25	HEADINGLEY REGIONAL 3 - DIST - ST. FX OUT	0	0	1.50	1.58	0.14
7-Jul-25	HEADINGLEY REGIONAL 3 - DIST - HDLY OUT	0	0	1.52	1.68	0.18
6-Jul-25	HEADINGLEY REGIONAL 3 - DIST - WSP OUT	0	0	1.38	1.52	0.14
22-Jul-25	HEADINGLEY REGIONAL 1 - RAW	260	1	-	-	9.01
22-Jul-25	HEADINGLEY REGIONAL 2 - TREATED	0	0	1.91	2.00	0.14
22-Jul-25	HEADINGLEY REGIONAL 3 - DIST @ HCC IN	0	0	1.84	2.05	0.14
22-Jul-25	HEADINGLEY REGIONAL 3 - DIST - GI OUT	0	0	0.62	0.73	0.15
22-Jul-25	HEADINGLEY REGIONAL 3 - DIST - ROSSER OUT	0	0	1.44	1.60	0.17
21-Jul-25	HEADINGLEY REGIONAL 3 - DIST - ST. FX OUT	0	0	1.91	2.06	0.14
21-Jul-25	HEADINGLEY REGIONAL 3 - DIST - HDLY OUT	0	0	1.92	2.07	0.15

22-Jul-25	HEADINGLEY REGIONAL 3 - DIST - WSP OUT	0	0	1.40	1.55	0.17
6-Aug-25	HEADINGLEY REGIONAL 1 - RAW	133	5	-	-	8.97
6-Aug-25	HEADINGLEY REGIONAL 2 - TREATED	0	0	1.90	1.99	0.11
6-Aug-25	HEADINGLEY REGIONAL 3 - DIST @ WWTP IN	0	0	1.64	1.84	0.12
6-Aug-25	HEADINGLEY REGIONAL 3 - DIST - GI OUT	0	0	0.88	1.01	0.18
6-Aug-25	HEADINGLEY REGIONAL 3 - DIST - ROSSER OUT	0	0	1.50	1.68	0.18
5-Aug-25	HEADINGLEY REGIONAL 3 - DIST - ST. FX OUT	0	0	1.54	1.72	0.14
5-Aug-25	HEADINGLEY REGIONAL 3 - DIST - HDLY OUT	0	0	1.85	2.00	0.13
6-Aug-25	HEADINGLEY REGIONAL 3 - DIST - WSP OUT	0	0	1.52	1.73	0.14
19-Aug-25	HEADINGLEY REGIONAL 1 - RAW	285	54	-	-	6.48
19-Aug-25	HEADINGLEY REGIONAL 2 - TREATED	0	0	1.84	2.00	0.11
19-Aug-25	HEADINGLEY REGIONAL 3 - DIST @ BAYER CROP SCIENCE	0	0	1.83	1.92	0.12
19-Aug-25	HEADINGLEY REGIONAL 3 - DIST - GI OUT	0	0	0.84	0.98	0.14
19-Aug-25	HEADINGLEY REGIONAL 3 - DIST - ROSSER OUT	0	0	1.51	1.64	0.14
18-Aug-25	HEADINGLEY REGIONAL 3 - DIST - ST. FX OUT	0	0	1.38	1.57	0.13
18-Aug-25	HEADINGLEY REGIONAL 3 - DIST - HDLY OUT	0	0	1.65	1.79	0.11
19-Aug-25	HEADINGLEY REGIONAL 3 - DIST - WSP OUT	0	0	1.45	1.56	0.15
2-Sep-25	HEADINGLEY REGIONAL 1 - RAW	326	135	-	-	6.18
2-Sep-25	HEADINGLEY REGIONAL 2 - TREATED	0	0	1.42	1.55	0.13
2-Sep-25	HEADINGLEY REGIONAL 3 - DIST @ WSP IN	0	0	1.42	1.56	0.14
2-Sep-25	HEADINGLEY REGIONAL 3 - DIST - GI OUT	0	0	0.88	0.98	0.12
2-Sep-25	HEADINGLEY REGIONAL 3 - DIST - ROSSER OUT	0	0	1.23	1.38	0.10
1-Sep-25	HEADINGLEY REGIONAL 3 - DIST - ST. FX OUT	0	0	1.32	1.47	0.16
1-Sep-25	HEADINGLEY REGIONAL 3 - DIST - HDLY OUT	0	0	1.42	1.53	0.13
2-Sep-25	HEADINGLEY REGIONAL 3 - DIST - WSP OUT	0	0	1.27	1.47	0.14
16-Sep-25	HEADINGLEY REGIONAL 1 - RAW	199	133	-	-	5.45
16-Sep-25	HEADINGLEY REGIONAL 2 - TREATED	0	0	1.48	1.61	0.12
16-Sep-25	HEADINGLEY REGIONAL 3 - DIST @ HDLY IN	0	0	1.52	1.66	0.12
16-Sep-25	HEADINGLEY REGIONAL 3 - DIST - GI OUT	0	0	0.83	0.93	0.10
16-Sep-25	HEADINGLEY REGIONAL 3 - DIST - ROSSER OUT	0	0	1.24	1.36	0.08
16-Sep-25	HEADINGLEY REGIONAL 3 - DIST - ST. FX OUT	0	0	1.31	1.47	0.10
16-Sep-25	HEADINGLEY REGIONAL 3 - DIST - HDLY OUT	0	0	1.42	1.54	0.12
16-Sep-25	HEADINGLEY REGIONAL 3 - DIST - WSP OUT	0	0	1.14	1.26	0.10
29-Sep-25	HEADINGLEY REGIONAL 1 - RAW	>2420	299	-	-	6.96
29-Sep-25	HEADINGLEY REGIONAL 2 - TREATED	0	0	1.26	1.37	0.13
29-Sep-25	HEADINGLEY REGIONAL 3 - DIST @ ROSSER IN	0	0	1.00	1.20	0.10
29-Sep-25	HEADINGLEY REGIONAL 3 - DIST - GI OUT	0	0	0.81	0.88	0.10
29-Sep-25	HEADINGLEY REGIONAL 3 - DIST - ROSSER OUT	0	0	1.15	1.27	0.11
28-Sep-25	HEADINGLEY REGIONAL 3 - DIST - ST. FX OUT	0	0	1.29	1.42	0.09
28-Sep-25	HEADINGLEY REGIONAL 3 - DIST - HDLY OUT	0	0	1.16	1.23	0.14
29-Sep-25	HEADINGLEY REGIONAL 3 - DIST - WSP OUT	0	0	1.10	1.17	0.13

14-Oct-25	HEADINGLEY REGIONAL 1 - RAW	687	285	-	-	7.31
14-Oct-25	HEADINGLEY REGIONAL 2 - TREATED	0	0	1.57	1.79	0.10
14-Oct-25	HEADINGLEY REGIONAL 3 - DIST @ SFX IN	0	0	1.49	1.69	0.07
13-Oct-25	HEADINGLEY REGIONAL 3 - DIST - GI OUT	0	0	0.87	0.97	0.20
13-Oct-25	HEADINGLEY REGIONAL 3 - DIST - ROSSER OUT	0	0	1.39	1.56	0.20
14-Oct-25	HEADINGLEY REGIONAL 3 - DIST - ST. FX OUT	0	0	1.27	1.39	0.09
14-Oct-25	HEADINGLEY REGIONAL 3 - DIST - HDLY OUT	0	0	1.66	1.79	0.09
13-Oct-25	HEADINGLEY REGIONAL 3 - DIST - WSP OUT	0	0	0.97	1.05	0.13
28-Oct-25	HEADINGLEY REGIONAL 1 - RAW	579	308	-	-	6.31
28-Oct-25	HEADINGLEY REGIONAL 2 - TREATED	0	0	1.59	1.78	0.08
28-Oct-25	HEADINGLEY REGIONAL 3 - DIST @ GI IN	0	0	1.42	1.56	0.08
28-Oct-25	HEADINGLEY REGIONAL 3 - DIST - GI OUT	0	0	1.01	1.18	0.11
28-Oct-25	HEADINGLEY REGIONAL 3 - DIST - ROSSER OUT	0	0	1.36	1.60	0.08
27-Oct-25	HEADINGLEY REGIONAL 3 - DIST - ST. FX OUT	0	0	1.32	1.48	0.15
27-Oct-25	HEADINGLEY REGIONAL 3 - DIST - HDLY OUT	0	0	1.64	1.81	0.18
28-Oct-25	HEADINGLEY REGIONAL 3 - DIST - WSP OUT	0	0	1.37	1.48	0.15
12-Nov-25	HEADINGLEY REGIONAL 1 - RAW	115	9	-	-	8.04
12-Nov-25	HEADINGLEY REGIONAL 2 - TREATED	0	0	1.72	2.00	0.09
12-Nov-25	HEADINGLEY REGIONAL 3 - DIST @ HCC IN	0	0	1.67	1.92	0.15
12-Nov-25	HEADINGLEY REGIONAL 3 - DIST - GI OUT	0	0	0.77	0.88	0.11
12-Nov-25	HEADINGLEY REGIONAL 3 - DIST - ROSSER OUT	0	0	1.06	1.23	0.09
12-Nov-25	HEADINGLEY REGIONAL 3 - DIST - ST. FX OUT	0	0	1.33	1.50	0.08
12-Nov-25	HEADINGLEY REGIONAL 3 - DIST - HDLY OUT	0	0	1.48	1.67	0.09
12-Nov-25	HEADINGLEY REGIONAL 3 - DIST - WSP OUT	0	0	1.07	1.18	0.12
24-Nov-25	HEADINGLEY REGIONAL 1 - RAW	25	3	-	-	10.00
24-Nov-25	HEADINGLEY REGIONAL 2 - TREATED	0	0	1.70	1.94	0.06
24-Nov-25	HEADINGLEY REGIONAL 3 - DIST @ WWTP IN	0	0	0.94	1.12	0.07
23-Nov-25	HEADINGLEY REGIONAL 3 - DIST - GI OUT	0	0	1.29	1.42	0.25
23-Nov-25	HEADINGLEY REGIONAL 3 - DIST - ROSSER OUT	0	0	1.23	1.46	0.07
24-Nov-25	HEADINGLEY REGIONAL 3 - DIST - ST. FX OUT	0	0	0.93	1.12	0.10
24-Nov-25	HEADINGLEY REGIONAL 3 - DIST - HDLY OUT	0	0	1.02	1.14	0.08
23-Nov-25	HEADINGLEY REGIONAL 3 - DIST - WSP OUT	0	0	0.99	1.15	0.09
9-Dec-25	HEADINGLEY REGIONAL 1 - RAW	6	0	-	-	3.25
9-Dec-25	HEADINGLEY REGIONAL 2 - TREATED	0	0	1.40	1.63	0.05
9-Dec-25	HEADINGLEY REGIONAL 3 - DIST @ AIR FAB	0	0	1.04	1.23	0.05
9-Dec-25	HEADINGLEY REGIONAL 3 - DIST - GI OUT	0	0	0.91	1.02	0.31
9-Dec-25	HEADINGLEY REGIONAL 3 - DIST - ROSSER OUT	0	0	1.02	1.25	0.06
8-Dec-25	HEADINGLEY REGIONAL 3 - DIST - ST. FX OUT	0	0	0.97	1.13	0.16
8-Dec-25	HEADINGLEY REGIONAL 3 - DIST - HDLY OUT	0	0	1.22	1.40	0.13
9-Dec-25	HEADINGLEY REGIONAL 3 - DIST - WSP OUT	0	0	1.14	1.34	0.38
23-Dec-25	HEADINGLEY REGIONAL 1 - RAW	5	0	-	-	4.51

23-Dec-25	HEADINGLEY REGIONAL 2 - TREATED	0	0	1.77	2.00	0.04
23-Dec-25	HEADINGLEY REGIONAL 3 - DIST @ WSP IN	0	0	1.09	1.35	0.08
23-Dec-25	HEADINGLEY REGIONAL 3 - DIST - GI OUT	0	0	0.71	0.87	0.09
23-Dec-25	HEADINGLEY REGIONAL 3 - DIST - ROSSER OUT	0	0	1.45	1.56	0.08
23-Dec-25	HEADINGLEY REGIONAL 3 - DIST - ST. FX OUT	0	0	1.14	1.29	0.08
23-Dec-25	HEADINGLEY REGIONAL 3 - DIST - HDLY OUT	0	0	1.12	1.43	0.07
23-Dec-25	HEADINGLEY REGIONAL 3 - DIST - WSP OUT	0	0	0.92	1.11	0.07

Appendix C: Peony Farm Reservoir 162.75 2025 Bacteriological Results

Date Sampled	Sample Identification	TC	EC	Free Cl2	Total Cl2
31-Dec-24	PEONY FARM 3 - DIST - PF OUTGOING	0	0	1.64	1.94
31-Dec-24	PEONY FARM 3 - DIST - PP @ RINK	0	0	1.19	1.43
14-Jan-25	PEONY FARM 3 - DIST - PF OUTGOING	0	0	1.92	2.00
14-Jan-25	PEONY FARM 3 - DIST - PP @ RINK	0	0	1.07	1.53
28-Jan-25	PEONY FARM 3 - DIST - PF OUTGOING	0	0	1.63	1.93
28-Jan-25	PEONY FARM 3 - DIST - PP @ HIGH BLUFF HALL	0	0	1.05	1.46
11-Feb-25	PEONY FARM 3 - DIST - PF OUTGOING	0	0	1.56	2.02
11-Feb-25	PEONY FARM 3 - DIST - PP @ RINK	0	0	0.33	0.54
25-Feb-25	PEONY FARM 3 - DIST - PF OUTGOING	0	0	1.52	1.85
25-Feb-25	PEONY FARM 3 - DIST - PP @ HIGH BLUFF HALL	0	0	1.27	1.67
11-Mar-25	PEONY FARM 3 - DIST - PF OUTGOING	0	0	1.57	1.83
11-Mar-25	PEONY FARM 3 - DIST - PP @ HIGH BLUFF HALL	0	0	1.00	1.38
25-Mar-25	PEONY FARM 3 - DIST - PF OUTGOING	0	0	1.51	1.96
25-Mar-25	PEONY FARM 3 - DIST - PP @ RINK	0	0	0.39	0.79
08-Apr-25	PEONY FARM 3 - DIST - PF OUTGOING	0	0	1.70	1.92
08-Apr-25	PEONY FARM 3 - DIST - PP @ ??????	0	0	1.18	1.62
22-Apr-25	PEONY FARM 3 - DIST - PF OUTGOING	0	0	1.71	1.88
22-Apr-25	PEONY FARM 3 - DIST - PP @ ??????	0	0	1.23	1.59
06-May-25	PEONY FARM 3 - DIST - PF OUTGOING	0	0	0.39	0.72
06-May-25	PEONY FARM 3 - DIST - PP @ RINK	0	0	1.51	1.90
20-May-25	PEONY FARM 3 - DIST - PF OUTGOING	0	0	1.31	1.71
20-May-25	PEONY FARM 3 - DIST - High bluff Hall	0	0	1.48	1.89
03-Jun-25	PEONY FARM 3 - DIST - PF OUTGOING	0	0	1.09	1.36
03-Jun-25	PEONY FARM 3 - DIST - High bluff Hall	0	0	1.70	1.99
17-Jun-25	PEONY FARM 3 - DIST - PF OUTGOING	0	0	0.72	1.01
17-Jun-25	PEONY FARM 3 - DIST - High bluff Hall	0	0	1.44	1.87
01-Jul-25	PEONY FARM 3 - DIST - PF OUTGOING	0	0	1.31	1.74
01-Jul-25	PEONY FARM 3 - DIST - High bluff Hall	0	0	1.47	1.90
15-Jul-25	PEONY FARM 3 - DIST - PF OUTGOING	0	0	1.23	1.57
15-Jul-25	PEONY FARM 3 - DIST - High bluff Hall	0	0	1.44	1.85
29-Jul-25	PEONY FARM 3 - DIST - PF OUTGOING	0	0	1.26	1.60
29-Jul-25	PEONY FARM 3 - DIST - High bluff Hall	0	0	1.56	1.87
12-Aug-25	PEONY FARM 3 - DIST - PF OUTGOING	0	0	1.46	1.82
12-Aug-25	PEONY FARM 3 - DIST - PP @ High Bluff Hall	0	0	1.32	1.75
26-Aug-25	PEONY FARM 3 - DIST - PF OUTGOING	0	0	1.54	1.93
26-Aug-25	PEONY FARM 3 - DIST - PP @ High Bluff	0	0	1.33	1.65
09-Sep-25	PEONY FARM 3 - DIST - PF OUTGOING	0	0	1.61	1.92
09-Sep-25	PEONY FARM 3 - DIST - PP @ High Bluff Hall	0	0	1.16	1.50
23-Sep-25	PEONY FARM 3 - DIST - PF OUTGOING	0	0	1.58	1.95
23-Sep-25	PEONY FARM 3 - DIST - PP @ HIGH BLUFF HALL	0	0	1.26	1.60

07-Oct-25	PEONY FARM 3 - DIST - PF OUTGOING	0	0	1.56	1.84
07-Oct-25	PEONY FARM 3 - DIST - PP @ HIGH BLUFF HALL	0	0	1.21	1.45
21-Oct-25	PEONY FARM 3 - DIST - PF OUTGOING	0	0	1.52	1.88
21-Oct-25	PEONY FARM 3 - DIST - PP @ Community Centre	0	0	0.84	0.95
04-Nov-25	PEONY FARM 3 - DIST - PF OUTGOING	0	0	1.29	1.71
04-Nov-25	PEONY FARM 3 - DIST - PP @ HIGH BLUFF HALL	0	0	1.06	1.49
18-Nov-25	PEONY FARM 3 - DIST - PF OUTGOING	0	0	0.30	0.75
18-Nov-25	PEONY FARM 3 - DIST - PP @ Community Centre	0	0	1.44	1.94
02-Dec-25	PEONY FARM 3 - DIST - PF OUTGOING	0	0	1.43	1.85
02-Dec-25	PEONY FARM 3 - DIST - PP @ HIGH BLUFF HALL	0	0	1.05	1.47
16-Dec-25	PEONY FARM 3 - DIST - PF OUTGOING	0	0	1.51	1.96
16-Dec-25	PEONY FARM 3 - DIST - PP @ Community Centre	0	0	0.09	0.50
30-Dec-25	PEONY FARM 3 - DIST - PF OUTGOING	0	0	1.37	1.86
30-Dec-25	PEONY FARM 3 - DIST - PP @ HIGH BLUFF HALL	0	0	1.09	1.44

Appendix D: Cartier and Headingley Regional Water System THM and HAA Results

Disinfection By-product Report - THMs and HAAs

Water System Name: **Cartier Regional Water Co-op** Water System Code: **36.00**

Year: **2025** Operator -in-charge (Print): **Grant McGorman/Parker Page**

Total Trihalomethanes (THMs) [mg/L]	
Quality Standard: Less than or equal to 0.10 mg/L as locational running annual average of quarterly samples	
Sampling Location #1: Oakville In	
1st Quarter	0.0318
2nd Quarter	0.0394
3rd Quarter	0.0836
4th Quarter	0.0308
Yearly Average (mg/L)	0.04640
Yearly Average (ug/L)	46.40
Sampling Location #2: Fannystelle In	
1st Quarter	0.038
2nd Quarter	0.0385
3rd Quarter	0.0870
4th Quarter	0.0373
Yearly Average (mg/L)	0.05020
Yearly Average (ug/L)	50.20

Total Halo Acetic Acids (HAAs) [mg/L]	
Quality Standard: Less than or equal to 0.08 mg/L as locational running annual average of quarterly samples	
Sampling Location #1: Fortier Booster	
1st Quarter	0.0192
2nd Quarter	0.0255
3rd Quarter	0.0286
4th Quarter	0.0208
Yearly Average (mg/L)	0.02275
Yearly Average (ug/L)	22.75
Sampling Location #2: Elm Bank Booster	
1st Quarter	0.0219
2nd Quarter	0.0277
3rd Quarter	0.0328
4th Quarter	0.0208
Yearly Average (mg/L)	0.0258
Yearly Average (ug/L)	25.80

Disinfection By-product Report - THMs and HAAs

Water System Name: Headingley Regional Water System Water System Code: 89.40

Year: 2025

Operator -in-charge (Print): Danielle Vaillant

Total Trihalomethanes (THMs) [mg/L]

Quality Standard: Less than or equal to 0.1 mg/L as
Locational running average of quarterly samples

Sampling Location #1: GROSSE ISLE IN

1st Quarter	0.0446
2nd Quarter	0.0338
3rd Quarter	0.1080
4th Quarter	0.0418
Yearly Average (mg/L)	0.0571
Yearly Average (ug/L)	57.05

Sampling Location #2: WEST ST. PAUL IN

1st Quarter	0.0415
2nd Quarter	0.0608
3rd Quarter	0.0800
4th Quarter	0.0332
Yearly Average (mg/L)	0.0539
Yearly Average (ug/L)	53.88

Total Halo Acetic Acids (HAAs) [mg/L]

Quality Standard: Less than or equal to 0.08 mg/L as
Locational running average of quarterly samples

Sampling Location #1: SFX IN

1st Quarter	0.0246
2nd Quarter	0.0530
3rd Quarter	0.0350
4th Quarter	0.0420
Yearly Average (mg/L)	0.0375
Yearly Average (ug/L)	37.50

Sampling Location #2: ROSSER IN

1st Quarter	0.0163
2nd Quarter	0.0488
3rd Quarter	0.0187
4th Quarter	0.0304
Yearly Average (mg/L)	0.0286
Yearly Average (ug/L)	28.60

Appendix E: Cartier Regional Public Water System (36.00) Annual Lab Results

Results Summary WP2513295

Project Cartier Regional - PWS 36.00
Report To Amanda Fewings, Manitoba
 Conservation & Climate
Date Received 12-Aug-2025 14:20
Issue Date 20-Aug-2025 13:09
Amendment 0

			Cartier Regional 1 - Raw Raw	Cartier Regional 1 - Raw Raw	Cartier Regional 2 - Treated Treated	Cartier Regional 3 - Distribution @ (add from coc) Distribution
Client Sample ID						
Date Sampled			12-Aug- 2025	12-Aug- 2025	12-Aug- 2025	12-Aug- 2025
Time Sampled			11:00	11:00	11:15	11:00
ALS Sample ID			WP251329 5-001	WP251329 5-002	WP251329 5-003	WP251329 5-004
Analyte	Lowest Detection Limit	Units	Sub-Matrix: Water	Sub-Matrix: Water	Sub-Matrix: Water	Sub-Matrix: Water

Field Tests (Matrix: Water)

Chlorine, free, field	0.01	mg/L			1.82	1.42
Chlorine, total, field	0.01	mg/L			2.00	1.51

Sample Preparation (Matrix: Water)

Dissolved carbon filtration
location

lab

lab

Physical Tests (Matrix: Water)

Conductivity	2.0	µS/c m	1070		317	
Absorbance, UV (@ 254nm)	0.0050	AU/c m	0.217		0.0290	
Alkalinity, bicarbonate (as CaCO3)	1.0	mg/L	248		80.8	
Alkalinity, carbonate (as CaCO3)	1.0	mg/L	22.4		<1.0	
Alkalinity, hydroxide (as CaCO3)	1.0	mg/L	<1.0		<1.0	
Alkalinity, total (as CaCO3)	1.0	mg/L	271		80.8	
Colour, true	5.0	CU	15.7		<5.0	
Hardness (as CaCO3), from total Ca/Mg	0.50	mg/L	388		68.2	
Langelier index (@ 4°C)	0.010		1.05		-0.617	
Solids, total dissolved [TDS]	3.0	mg/L	683		164	
Turbidity	0.10	NTU	6.32		<0.10	

pH	0.10	pH units	8.53	8.00
Transmittance, UV (@ 254nm)	1.0	% T/cm	60.7	93.5
Langelier index (@ 60°C)	0.010		1.79	0.153

Anions and Nutrients (Matrix: Water)

Ammonia, total (as N)	0.0050	mg/L	0.0806	<0.0050
Bromide	0.050	mg/L	0.108	<0.050
Chloride	0.10	mg/L	37.9	16.0
Fluoride	0.020	mg/L	0.140	0.294
Nitrate (as N)	0.0050	mg/L	0.163	0.118
Nitrite (as N)	0.0010	mg/L	0.0064	<0.0010
Sulfate (as SO4)	0.30	mg/L	263	50.1

Organic / Inorganic Carbon (Matrix: Water)

Carbon, dissolved organic [DOC]	0.50	mg/L	9.43	1.78
Carbon, total organic [TOC]	0.50	mg/L	9.59	1.80

Ion Balance (Matrix: Water)

Anion sum	0.10	meq/L	12.0	3.13
Cation sum (total)	0.10	meq/L	11.5	3.02
Ion balance (cations/anions)	0.01	%	95.8	96.5
Ion balance (APHA)	0.010	%	-2.13	-1.79

Total Metals (Matrix: Water)

Aluminum, total	3.0	µg/L	78.8	6.0	10.8
Antimony, total	0.10	µg/L	0.37	<0.10	<0.10
Arsenic, total	0.10	µg/L	8.02	1.25	1.36
Barium, total	0.10	µg/L	62.4	11.2	12.2
Beryllium, total	0.020	µg/L	<0.020	<0.020	<0.020
Bismuth, total	0.050	µg/L	<0.050	<0.050	<0.050
Boron, total	10	µg/L	142	133	131
Cadmium, total	0.0050	µg/L	0.0088	<0.0050	<0.0050
Calcium, total	50	µg/L	70900	12700	13300
Cesium, total	0.010	µg/L	0.014	<0.010	<0.010
Chromium, total	0.50	µg/L	<0.50	<0.50	<0.50
Cobalt, total	0.10	µg/L	0.20	<0.10	<0.10
Copper, total	0.50	µg/L	24.0	18.0	3.64
Iron, total	10	µg/L	87	<10	<10
Lead, total	0.050	µg/L	0.072	<0.050	<0.050
Lithium, total	1.0	µg/L	73.9	25.9	27.0

Magnesium, total	5.0	µg/L	51200	8870	9550
Manganese, total	0.10	µg/L	98.1	13.1	9.52
Molybdenum, total	0.050	µg/L	4.04	0.692	0.709
Nickel, total	0.50	µg/L	2.67	<0.50	<0.50
Phosphorus, total	50	µg/L	283	414	427
Potassium, total	50	µg/L	15200	4710	5030
Rubidium, total	0.20	µg/L	3.32	1.01	1.14
Selenium, total	0.050	µg/L	0.463	0.108	0.090
Silicon, total	100	µg/L	9470	3600	3700
Silver, total	0.010	µg/L	<0.010	<0.010	<0.010
Sodium, total	50	µg/L	77600	35400	37600
Strontium, total	0.20	µg/L	350	63.6	69.3
Sulfur, total	500	µg/L	99100	18200	18000
Tellurium, total	0.20	µg/L	<0.20	<0.20	<0.20
Thallium, total	0.010	µg/L	0.012	<0.010	<0.010
Thorium, total	0.10	µg/L	<0.10	<0.10	<0.10
Tin, total	0.10	µg/L	<0.10	<0.10	<0.10
Titanium, total	0.30	µg/L	3.93	<0.30	<0.30
Tungsten, total	0.10	µg/L	<0.10	<0.10	<0.10
Uranium, total	0.010	µg/L	3.18	0.471	0.514
Vanadium, total	0.50	µg/L	3.65	0.73	0.76
Zinc, total	3.0	µg/L	14.4	<3.0	<3.0
Zirconium, total	0.20	µg/L	0.22	<0.20	<0.20

**Organic Parameters
(Matrix: Water)**

Microcystin	0.15	µg/L	<0.15
-------------	------	------	-------

Appendix F: Headingley Regional Public Water System (89.40) Annual Lab Results

Results Summary WP2512901

Project	Headingley Regional - PWS 89.40
Report To	Amrith Kumar, Manitoba Conservation & Climate
Date Received	06-Aug-2025 13:20
Issue Date	14-Aug-2025 17:22
Amendment	0

			Headingley Regional 1 - Raw Raw	Headingley Regional 1 - Raw Raw	Headingley Regional 2 - Treated Treated	Headingley Regional 3 - Distribution @ Rosser Incoming Distribution
Client Sample ID						
Date Sampled			06-Aug-2025	06-Aug-2025	06-Aug-2025	06-Aug-2025
Time Sampled			09:30	09:30	08:20	11:15
ALS Sample ID			WP2512901- 001	WP2512901- 002	WP2512901- 003	WP2512901-004
Analyte	Lowest Detection Limit	Units	Sub-Matrix: Water	Sub-Matrix: Water	Sub-Matrix: Water	Sub-Matrix: Water

Sample Preparation (Matrix: Water)

Dissolved carbon filtration location	lab	lab
--------------------------------------	-----	-----

Physical Tests (Matrix: Water)

Conductivity	2.0	µS/cm	1040	208
Absorbance, UV (@ 254nm)	0.0050	AU/cm	0.180	0.0130
Alkalinity, bicarbonate (as CaCO3)	1.0	mg/L	227	52.8
Alkalinity, carbonate (as CaCO3)	1.0	mg/L	15.6	<1.0
Alkalinity, hydroxide (as CaCO3)	1.0	mg/L	<1.0	<1.0
Alkalinity, total (as CaCO3)	1.0	mg/L	242	52.8
Colour, true	5.0	CU	15.3	<5.0
Hardness (as CaCO3), from total Ca/Mg	0.50	mg/L	388	43.3
Langelier index (@ 4°C)	0.010		0.937	-1.24
Solids, total dissolved [TDS]	3.0	mg/L	615	113
Turbidity	0.10	NTU	30.7	0.14
pH	0.10	pH units	8.48	7.75
Transmittance, UV (@ 254nm)	1.0	% T/cm	66.1	97.0
Langelier index (@ 60°C)	0.010		1.68	-0.468

Anions and Nutrients (Matrix: Water)

Ammonia, total (as N)	0.0050	mg/L	0.178	0.0774
Bromide	0.010	mg/L	0.023	<0.010
Chloride	0.10	mg/L	46.0	12.6
Fluoride	0.020	mg/L	0.152	0.030
Nitrate (as N)	0.0050	mg/L	<0.0100	0.0456
Nitrite (as N)	0.0010	mg/L	<0.0020	<0.0010

Sulfate (as SO4)	0.30	mg/L	249	25.8
------------------	------	------	-----	------

Organic / Inorganic Carbon (Matrix: Water)

Carbon, dissolved organic [DOC]	0.50	mg/L	8.97	1.54
Carbon, total organic [TOC]	0.50	mg/L	9.94	1.23

Ion Balance (Matrix: Water)

Anion sum	0.10	meq/L	11.3	1.95
Cation sum (total)	0.10	meq/L	12.3	2.06
Ion balance (cations/anions)	0.01	%	109	106
Ion balance (APHA)	0.010	%	4.24	2.74

Total Metals (Matrix: Water)

Aluminum, total	3.0	µg/L	557	3.0	<3.0
Antimony, total	0.10	µg/L	0.58	<0.10	<0.10
Arsenic, total	0.10	µg/L	8.93	0.74	0.82
Barium, total	0.10	µg/L	79.4	7.64	8.29
Beryllium, total	0.020	µg/L	0.037	<0.020	<0.020
Bismuth, total	0.050	µg/L	<0.050	<0.050	<0.050
Boron, total	10	µg/L	160	143	142
Cadmium, total	0.0050	µg/L	0.0985	<0.0050	<0.0050
Calcium, total	50	µg/L	66500	7740	8440
Cesium, total	0.010	µg/L	0.087	<0.010	<0.010
Chromium, total	0.50	µg/L	1.12	<0.50	<0.50
Cobalt, total	0.10	µg/L	0.79	<0.10	<0.10
Copper, total	0.50	µg/L	71.7	19.3	3.44
Iron, total	10	µg/L	912	<10	<10
Lead, total	0.050	µg/L	0.767	<0.050	<0.050
Lithium, total	1.0	µg/L	70.4	16.7	18.4
Magnesium, total	5.0	µg/L	54000	5830	6490
Manganese, total	0.10	µg/L	179	5.85	5.66
Molybdenum, total	0.050	µg/L	4.56	0.435	0.451
Nickel, total	0.50	µg/L	5.13	<0.50	<0.50
Phosphorus, total	50	µg/L	149	<50	<50
Potassium, total	50	µg/L	16500	3430	3760
Rubidium, total	0.20	µg/L	4.63	0.65	0.83
Selenium, total	0.050	µg/L	0.822	<0.050	0.083
Silicon, total	100	µg/L	8930	1880	2060
Silver, total	0.010	µg/L	0.011	<0.010	<0.010
Sodium, total	50	µg/L	92200	25200	25700
Strontium, total	0.20	µg/L	358	37.7	41.9
Sulfur, total	500	µg/L	93400	9500	10700
Tellurium, total	0.20	µg/L	<0.20	<0.20	<0.20
Thallium, total	0.010	µg/L	0.022	<0.010	<0.010
Thorium, total	0.10	µg/L	0.11	<0.10	<0.10
Tin, total	0.10	µg/L	0.22	0.16	<0.10

Titanium, total	0.30	µg/L	16.9	<0.30	<0.30
Tungsten, total	0.10	µg/L	<0.10	<0.10	<0.10
Uranium, total	0.010	µg/L	3.26	0.299	0.339
Vanadium, total	0.50	µg/L	6.32	0.71	0.72
Zinc, total	3.0	µg/L	16.2	3.2	<3.0
Zirconium, total	0.20	µg/L	0.64	<0.20	<0.20

Organic Parameters (Matrix: Water)

Microcystin	0.15	µg/L	<0.15
-------------	------	------	-------

Qualifier Legend

DLM Detection Limit Adjusted due to sample matrix effects (e.g. chemical interference, colour, turbidity).

Appendix G: CRWC Water Audits 2025

In 2024 the Office of Drinking discontinued providing system Audit reports to facilities.

For all previous year CRWC DWO Audits please follow this link: [Annual ODW Audits](#)

Who can we call with questions or concerns regarding our drinking water?

For general questions during regular business hours, contact the:

Cartier Water Treatment Facility (204-353-4055) or email cartierwtp@crwc.ca

Headingley Water Treatment Facility (204-832-2555) or email headingleywtp@crwc.ca